

DR KAITLIN LANDOLF (Orcid ID : 0000-0002-4633-3279)

DR BROOKE BARLOW (Orcid ID : 0000-0001-5118-7029)

DR JASON HEAVNER (Orcid ID : 0000-0001-7910-300X)

DR MOJDEH SABA HEAVNER (Orcid ID : 0000-0003-3007-7685)

Article type : Review of Therapeutics

Review of Emerging Pharmacotherapy for the Treatment of Coronavirus Disease 2019

Running title: COVID-19 Emerging Pharmacotherapy

Authors:

1. Ashley Barlow

University of Maryland Medical Center, Department of Pharmacy

Baltimore, MD

Address: 29 S. Greene Street, Suite 400, Baltimore, MD 21201

Email: ashley.barlow@umm.edu

2. Kaitlin M. Landolf

University of Maryland Medical Center, Department of Pharmacy

Baltimore, MD

This article has been accepted for publication and undergone full peer review but has not been through the copyediting, typesetting, pagination and proofreading process, which may lead to differences between this version and the [Version of Record](#). Please cite this article as [doi: 10.1002/PHAR.2398](https://doi.org/10.1002/PHAR.2398)

This article is protected by copyright. All rights reserved

3. Brooke Barlow
University of Kentucky Healthcare
Lexington, KY
4. Siu Yan Amy Yeung
University of Maryland Medical Center, Department of Pharmacy
Baltimore, MD
5. Jason J. Heavner
University of Maryland Baltimore Washington Medical Center
Glen Burnie, MD
6. Cassidy W. Claassen
University of Maryland School of Medicine, Center for International Health, Education, and
Biosecurity, Institute of Human Virology
Lusaka, Zambia
7. Mojdeh S. Heavner (Corresponding Author)
University of Maryland School of Pharmacy, Department of Pharmacy Services
Baltimore, MD
Address: 20 N. Pine Street, N427, Baltimore, MD 21201
Email: mheavner@rx.umaryland.edu

Conflict of interest statement: The authors declare no conflicts of interest.

ABSTRACT

The outbreak of severe acute respiratory syndrome coronavirus 2 (SARS-CoV-2) has evolved into an emergent global pandemic. Coronavirus disease 2019 (COVID-19) can manifest on a spectrum of illness from mild disease to severe respiratory failure requiring intensive care unit (ICU) admission. As the incidence continues to rise at a rapid pace, critical care teams are faced with challenging treatment decisions. There is currently no widely accepted standard of care in the pharmacological management of patients with COVID-19. Urgent identification of potential treatment strategies is a priority. Therapies include novel agents available in clinical trials or through compassionate use, and other drugs, repurposed antiviral and immune modulating therapies. Many have demonstrated *in vitro* or *in vivo* potential against other viruses that are similar to SARS-CoV-2. Critically ill patients with COVID-19 have additional considerations related to adjustments for organ impairment and renal replacement therapies, complex lists of concurrent medications, limitations with drug administration and compatibility, and unique toxicities that should be evaluated when utilizing these therapies. The purpose of this review is to summarize practical considerations for pharmacotherapy in patients with COVID-19, with the intent of serving as a resource for health care providers at the forefront of clinical care during this pandemic.

Keywords: Critical care, Infectious disease, Pharmacology, Antivirals, Cytochrome P450, Dialysis, Renal, Liver, Pharmacokinetics

Introduction

The recent outbreak of severe acute respiratory syndrome coronavirus 2 (SARS-CoV-2) and subsequent coronavirus disease 2019 (COVID-19) has created a global health emergency with unparalleled worldwide burden.¹ The full epidemiologic impact of this virus remains to be seen but an understanding of the approximate denominator will be important when considering the clinical characteristics of these cases, and the percentage of cases with more severe disease or resultant mortality.² In December 2019, the first reports of COVID-19 included a cluster of patients hospitalized with pneumonia in Wuhan, China. The most common presenting symptoms in these patients were fever (98%), cough (76%), dyspnea (55%), and myalgia or fatigue (44%).³ Characteristic laboratory and radiologic findings have included lymphopenia (63%) and rapid development of multiple patchy consolidations and ground-glass opacities bilaterally with a notable peripheral distribution seen on chest computed tomography (CT).^{3,4} Patients may present with a chest CT suggestive of COVID-19 even before developing a positive reverse transcription polymerase chain reaction (RT-PCR) assay result.⁵

Epidemiology and diagnostics for COVID-19 are rapidly evolving, giving us greater understanding of those at risk and elucidating more potential pharmacologic targets.⁶ SARS-CoV-2 is a betacoronavirus, in the same subgroup as Severe Acute Respiratory Syndrome-CoV (SARS-CoV) which caused the SARS outbreak in 2002 and the Middle East Respiratory Syndrome-CoV (MERS-CoV) which caused the MERS outbreak in 2012.⁷ As such, a rational approach to initial therapies to target COVID-19 would be those that were studied during the SARS and MERS outbreaks. Novel therapies and repurposing of old drugs are now being studied as therapeutic strategies against COVID-19. Treatment strategies that have been identified thus far include medications uncommonly used in clinical practice. Our understanding of important practical considerations is quite limited. In one study, approximately 25% of patients with COVID-19 required admission to an intensive care unit (ICU). These patients were older (66 vs. 51 years old) and more likely to have underlying comorbidities (72% vs. 37%).⁸ A study in Wuhan showed that of 52 critically ill ICU patients infected with SARS-CoV-2, mortality was 61.5%; among all ICU patients with COVID-19, organ dysfunction included acute respiratory distress syndrome (ARDS) (67%), acute kidney injury (29%), and hepatic dysfunction (29%).⁹ In the ICU, the

level of complexity required in the care of these patients involves the underlying disease state(s), multitudes of comorbidities, and polypharmacy.

The intent of this review is to provide healthcare providers with foundational knowledge on the therapies that have been proposed for use against COVID-19. We review critical key concepts for consideration in use of these therapies in practice, particularly in the ICU setting where the most severe cases will be managed.

Pharmacological Targets for COVID-19

Pharmacological therapies against SARS-CoV-2 target its viral structure and genome (Figure 1). SARS-CoV-2 expresses viral proteins on its outer surface that facilitate attachment onto host cells via angiotensin converting enzyme 2 (ACE2). SARS-CoV-2 is a single-stranded ribonucleic acid (RNA) beta coronavirus that replicates by recruiting nonstructural proteins such as 3-chymotrypsin-like protease, papain-like protease, helicase, and RNA-dependent RNA polymerase.¹⁰ These structural components have some similarities to other known viruses such as hepatitis B, hepatitis C, and human immunodeficiency virus (HIV), prompting repurposing of currently approved antiviral therapies targeted at these viruses. Nucleoside analogues available for HIV and respiratory viruses may have a therapeutic role in blocking RNA synthesis by targeting the RNA-dependent RNA polymerase found in SARS-CoV-2. Furthermore, the currently available HIV protease inhibitors have displayed some *in vitro* activity against the 3-chymotrypsin-like protease found in SARS and MERS.¹⁰ It is critical to be aware that currently available therapies have been specifically designed to target the viral genome of a certain virus and the SARS-CoV-2 physical structure may differ, limiting *in vivo* efficacy.¹⁰ Other non-structural or accessory proteins have a role for potential therapeutic targets in development as shown in Figure 1. As opposed to directly targeting viral replication, other therapeutic approaches can be aimed at modulating the innate immune system to attack the virus or inhibit cytokines that are upregulated during viral replication to dampen the physiologic response to disease.^{11,12} Practical considerations for current therapies available against SARS-CoV-2 are summarized in Table 1 and discussed at length in the following sections.

Antiviral Therapeutics

Remdesivir

Therapeutic Uses

Remdesivir (GS-5734) is an investigational antiviral agent undergoing phase 3 clinical trials for the treatment of COVID-19. Remdesivir was initially developed for treatment of Ebola hemorrhagic fever with trials still ongoing; however, it has not been approved globally for any indication.¹³ *In vitro* and *in vivo* animal data suggest activity against paramyxoviridae, filoviridae, and the coronaviridae including MERS-CoV, SARS-CoV, and SARS-CoV-2.^{3,14–16}

Mechanism of Action

Remdesivir is a 1'-cyano-substituted adenosine nucleotide analogue.¹⁷ As a pro-drug, remdesivir is metabolized in cells and tissues to an active nucleoside triphosphate (GS-443902) that inhibits viral RNA-dependent RNA polymerases early in the viral infectious cycle.^{18,19} Other potential mechanisms of this adenosine nucleotide analogue may involve lethal mutagenesis and chain termination.¹⁸ The incorporation of active nucleoside triphosphate via remdesivir at the beginning stages of replication of murine hepatitis virus *in vitro* had the most profound effect at 2 hours pre- and post-infection with a decreasing effect greater than 4 hours post-infection, suggesting a time dependent effect for drug activity.¹⁸

Rationale for Proposed Therapy

Nucleotide analogues are used for viral RNA or (deoxyribonucleic acid) DNA polymerase inhibition and have demonstrated decreased viral replication with their use. Resistance to mutagens of other medications *in vitro* has resulted in exo-ribonuclease proofreading and removal. Remdesivir has shown potential to avoid this proofreading, and thus, removal via the exo-ribonuclease.¹⁸ *In vitro* studies in human airway epithelial cell cultures as a lung model have found activity against coronaviruses.¹⁵ Studies assessing the potency of remdesivir were efficacious amongst divergent coronaviruses in human airway epithelial cells.¹⁸ Based on the existing evidence for remdesivir activity against SARS-CoV and similar viruses, remdesivir is being investigated for its use against SARS-CoV-2. In the United States, remdesivir has been used for compassionate purposes for

a duration of 4-10 days. In these patients, remdesivir was continued until improvement in respiratory symptoms.²⁰

Dosing and Pharmacokinetics

Ongoing clinical trials are studying remdesivir with a loading dose of 200 mg intravenously followed by 100 mg intravenously daily for 5 to 10 days in adult patients.^{21,22} Dosing for patients weighing <40 kg with a 5 mg/kg loading dose followed by a 2.5 mg/kg once daily maintenance dose has been studied for the treatment of Ebola.²³

The existing remdesivir pharmacokinetic data are extrapolated from *in vitro* human cell data and *in vivo* mouse and non-human primate data. Remdesivir is converted from the parent metabolite to the active metabolite, a triphosphorylated nucleoside, via anabolic intracellular kinase.^{24,25} Mice received remdesivir subcutaneously as 50 mg/kg once daily or 25 mg/kg twice daily with a decrease in plasma concentrations of the prodrug and a steady concentration of the activated drug in the lung.¹⁵ In the murine model, twice daily dosing-maintained lung concentrations for a longer duration. In the *in vitro* human lung cell model and the *in vivo* non-human primate model, once daily dosing was found to reach sufficient concentrations with remdesivir demonstrating an activated nucleoside triphosphate half-life of approximately 20 hours.^{19,26}

There are no data available to date regarding remdesivir dosing in patients with renal or hepatic impairment. Data on clearance of remdesivir in renal replacement therapy are also not yet available. These are important pharmacokinetic considerations that will need to be elucidated given that patients receiving remdesivir are likely to be critically ill with end-organ failure.⁹

Adverse Effects

Reported adverse effects of remdesivir after use in three patients in the United States included nausea, vomiting, gastroparesis, or rectal bleeding with no other reported symptoms. These patients also experienced elevated aminotransferase levels occurring 1-5 days after initiating remdesivir.²⁰ However, it is unclear whether this laboratory change is due to the drug itself or the virus, as a third of critically ill patients with

COVID-19 have been observed with liver dysfunction.⁹ In a study using remdesivir for Ebola virus in humans, one patient experienced hypotension during infusion of the loading dose, necessitating discontinuation; that patient ultimately died due to cardiac arrest.²⁷ A patient experienced neurological complications after receiving remdesivir for Ebola treatment in a Phase 1 study; however, it is not clear if this was due exclusively to having received remdesivir.¹⁹ Currently, the data on remdesivir use in humans is too sparse to have a clear adverse effect profile for this agent. Current phase 3 randomized clinical trials will provide more conclusive insight into the adverse effects of remdesivir.^{21,22,28}

Administration Considerations

Remdesivir is manufactured as a lyophilized powder that requires reconstitution and is administered intravenously over 30 minutes. The infusion duration has also been extended over longer times to obtain higher intracellular concentrations of the active metabolite.²⁹ There are no data regarding compatibility of remdesivir with other intravenous medications. To date, drug-drug and drug-nutrition interactions have not been reported.

Chloroquine and Hydroxychloroquine

Therapeutic Uses

Chloroquine analogues, chloroquine phosphate and hydroxychloroquine, have been employed for the prevention and treatment of malaria since the early 1900s.³⁰ Aside from their anti-malarial properties, chloroquine analogues possess immunomodulatory effects lending to their utility for the treatment of autoimmune conditions such as systemic lupus erythematosus and rheumatoid arthritis. The multimodal properties of chloroquine analogues and their minimal toxicity profile has led to their investigation in the treatment of virus-induced illness where the pathologic features are driven by inflammatory response, such as in HIV-associated immune reconstitution inflammatory syndrome.³¹

Mechanism of Action

Chloroquine analogues are weak bases, that, in their non-protonated form, penetrate and concentrate within acidic intracellular organelles such as endosomes and lysosomes. Once present intracellularly, chloroquine analogues become protonated and increase intra-vesicular pH resulting in prevention of endosomal trafficking, dysfunctional cellular enzymes, and impaired protein synthesis.³⁰ Chloroquine-mediated pH alterations have been proposed to result in early inhibition of viral replication through interference with endosome-mediated viral entry or late transport of the enveloped virus. This mechanism has translated to the potential role of chloroquine analogues in the treatment of COVID-19 and also appears to interfere with the terminal glycosylation of ACE2 receptor expression which prevents SARS-CoV-2 receptor binding and subsequent spread of infection.³²

Rationale for Proposed Therapy

Clinical data supporting the use of chloroquine analogues in the treatment of coronavirus has been centered around several *in vitro* studies from the SARS-CoV outbreak in the early 2000s with the use of chloroquine. Keyaerts and colleagues tested the cytotoxic potential of chloroquine against SARS-CoV in an *in vitro* cell culture. Chloroquine demonstrated a potent cytotoxic response with a 99% inhibition of viral replication at day 3.³³ Further *in vitro* models supported its cytotoxic response and observed that application of chloroquine prior to viral exposure resulted in favorable inhibition of viral spread, suggesting its potential role as an effective prophylactic intervention.³²

Hydroxychloroquine, a hydroxy-derivative of chloroquine with an improved safety profile, has also been studied *in vitro* against SARS-CoV-2 with three-fold higher cytotoxic potential compared to chloroquine.³⁴ Wang and colleagues have demonstrated potent antiviral effect at both entry and post-entry states at plasma concentrations of 6.90 μM . This concentration can be safely achieved in humans.³⁵ Clinical data in humans thus far has been limited, with the best available evidence to-date from over 100 patients from 10 different hospitals in China during the current COVID-19 outbreak. This pooled analysis demonstrated superiority of chloroquine compared to control in inhibiting exacerbations of pneumonia, improving lung imaging findings, promoting viral negative conversion, and shortening the disease course in the absence of any adverse effects.³⁶ The dual mechanism of anti-viral and anti-inflammatory effects of chloroquine have been proposed

to account for its utility in preventing COVID-19-related pneumonia. Ongoing trials for hydroxychloroquine are actively recruiting with hopes to further delineate its role in the treatment paradigm for COVID-19.³⁷

Dosing and Pharmacokinetics

Chloroquine is formulated as a tablet in a phosphate salt form for oral administration. In the treatment of COVID-19, expert consensus recommends chloroquine phosphate tablet at a dose of 500 mg orally twice daily for a duration of 10 days.³⁸ Bioavailability after oral administration is complete (~60-100%) and rapid within 30 minutes. Chloroquine is widely distributed into nearly every organ system including the eyes, heart, kidney, liver, and lungs where retention is prolonged.³⁹ Chloroquine is metabolized into an active metabolite, desethyl chloroquine, via hepatic enzymes cytochrome P450 (CYP) 2C8 and CYP3A4. This metabolite accounts for a small portion of its pharmacologic activity. Chloroquine is a major substrate of CYP2D6. This enzyme accounts for ~30% of its inactivation; inhibitors of this enzyme should be avoided due to a heightened risk of accumulation and toxicity. Chloroquine is predominantly eliminated in the urine with ~50% of a dose recovered unchanged. No dose adjustments are needed if creatinine clearance (CrCl) >10 mL/min; however, administration of 50% of the dose is required in patients on intermittent hemodialysis, peritoneal dialysis, or if CrCl <10 mL/min. Patients receiving continuous renal replacement therapy (CRRT) should receive full dose chloroquine.³⁹

Hydroxychloroquine sulfate is available as a film-coated tablet for oral administration. Dosing recommendations for COVID-19 are not well-defined and clinical trials and *in vitro* data are ongoing to assist with dose optimization. Current *in vitro* pharmacokinetic models suggest a loading dose of hydroxychloroquine 400 mg orally twice daily on day one, followed by 200 mg orally twice daily for four days. Hydroxychloroquine has similar or possibly superior cytotoxic effects against SARS-CoV-2 as chloroquine 500mg twice daily. Translation of the cytotoxic effects of hydroxychloroquine *in vivo* remains unknown.³⁴ A clinical trial of hydroxychloroquine for COVID-19 is actively recruiting, with a planned intervention of 400 mg by mouth once daily for a total duration of 5 days.³⁷ The major difference in dosing strategies is the utility of a loading dose. Given the terminal half-life of hydroxychloroquine is approximately 50 days in blood and remains in the body for up to 3 months, a loading dose is a reasonable approach until the clinical outcomes from on-going trials are published. Hydroxychloroquine has rapid absorption after oral administration, wide

Accepted Article
volume of distribution, and prolonged half-life. Metabolism and elimination of hydroxychloroquine differ from chloroquine, as reliance on CYP enzymes for elimination is minimal and clearance is not correlated with renal function. No renal or hepatic dose adjustments are recommended, however, cautious use with severe impairment is advised. Given the wide volume of distribution (~15.5 L/hour) and high lipophilicity of the compound, CRRT is likely to have minimal impact on drug removal.

Adverse Effects

Chloroquine and hydroxychloroquine are generally well-tolerated with the most common adverse effects being gastrointestinal intolerances such as nausea, vomiting, abdominal cramping, and a metallic taste. Acute toxicity in the setting of supratherapeutic dosing may manifest as cardiomyopathy, neuropathy or myopathy. Retinopathy, a hallmark toxicity of hydroxychloroquine and chloroquine, is predominantly associated with high doses, long-term administration (i.e., hydroxychloroquine for systemic lupus erythematosus, or rheumatoid arthritis), and are unlikely of concern in the setting of COVID-19 treatment. Although the manufacturer's labeling of chloroquine and hydroxychloroquine caution against their use in patients with glucose-6-phosphate dehydrogenase (G6PD) deficiency, there are limited data to support this risk and no incidence of hemolytic anemia has been seen in patients with G6PD in 30 years of drug exposure.^{39,40} Both agents are safe in pregnancy with minimal risk of congenital malformations.⁴¹ Albeit rare, use in patients with pre-existing cardiac disease or QTc prolongation should be avoided due to the risk of torsade de pointes.

Concurrent administration of QTc prolonging agents and strong 2D6 inhibitors (chloroquine only) should be avoided to minimize cardiac adverse effects. Notable dermatologic adverse effects can include photosensitivity, lichenoid reactions, and drug eruptions with chloroquine, and acute generalized exanthematous pustulosis with hydroxychloroquine.^{39,40} In post-marketing data, case reports of hypoglycemia progressing to loss of consciousness has occurred with these agents in patients with a history of diabetes on concurrent anti-diabetic agents.^{39,40} The proposed mechanism of hypoglycemia involves inhibited insulin degradation. Patients have required up to a 30% reduction in insulin doses with concurrent hydroxychloroquine administration.⁴² Baseline and routine monitoring of blood glucose and EKG for the QTc interval are recommended for patients on chloroquine analogue therapy.

Administration Considerations

To mitigate nausea and vomiting, it is recommended to administer chloroquine and hydroxychloroquine with food. Chloroquine can be crushed and mixed with flavored syrups or enclosed in gelatin capsules to mask the bitter taste.³⁹ In patients who are mechanically ventilated, chloroquine can be extemporaneously compounded into oral suspension. Hydroxychloroquine tablets should not be crushed or split at the bedside for administration but instead require removal of the film coating to be extemporaneously compounded into a solution for administration via enteral tubes. Neither agent is available for intravenous administration and would be an unfavorable option in patients who are not permitted to take anything by mouth or have no enteral access.

Administration of antacids within 4 hours of chloroquine should be avoided due to a potential for chelation and reduced bioavailability. This interaction is not present with hydroxychloroquine. A theoretical drug-drug interaction exists between proton-pump inhibitors (PPIs) and chloroquine analogues, as the blockage of H⁺, K⁺ -ATPase by PPIs in lysosomes can raise the pH and reduce drug accumulation, which could weaken immunomodulatory effects. However, effects of this interaction *in vivo* are unknown.^{39,40}

Lopinavir/Ritonavir

Therapeutic Uses

Lopinavir (LPV) is an aspartic acid protease inhibitor developed for the treatment of HIV. Lopinavir is co-formulated with ritonavir (LPV/r) to boost the pharmacokinetic activity and half-life of LPV through inhibition of CYP450. LPV/r provides potent and sustained viral load reductions for patients with HIV, which has prompted interest in assessing its efficacy in other viruses that function with similar machinery.⁴³

Mechanism of Action

Proteases are essential enzymes for the production and maturation of viral genomes. The primary antiviral effect of protease inhibitors is prevention of viral replication, thus limiting spread into host cells.⁴³ The

therapeutic rationale for LPV/r arises from *in vitro* studies demonstrating inhibition of the 3-chymotrypsin-like protease found in novel coronaviruses.^{44,45} However, LPV was specifically designed to match the structure of the C2 catalytic site within the HIV aspartic acid protease. SARS-CoV-2 protease is a cysteine protease family and is structurally dissimilar as it lacks a C2 catalytic site.¹⁰

Rationale for Proposed Therapy

The therapeutic value of LPV/r emerged from *in vitro* studies testing its utility for SARS and MERS. Chan and colleagues performed *in vitro* testing of LPV/r for severe MERS-CoV in marmosets. LPV/r improved clinical scores for weight loss and symptom burden, improved radiological clearance, and decreased viral loads in necroscopied lungs.⁴⁵ The benefit of LPV/r has yet to be clearly replicated in human cell cultures, with some studies showing complete lack of *in vitro* activity.⁴⁶ Clinical *in vivo* studies from SARS and MERS outbreaks demonstrated that the use of LPV/r 400-100 mg by mouth twice daily combined with ribavirin with or without corticosteroids initiated during the early phase of viral acquisition reduced rates of ARDS or death when compared with a matched cohort who received supportive care or ribavirin alone.^{44,47,48} However, these findings did not remain significant if LPV/r was initiated later in the disease course, reiterating the lack of pharmacologic effect against viral genome that has been integrated into host DNA.⁴⁸ Available literature to date for LPV/r in the treatment of COVID-19 stems from a descriptive case series of five patients in Singapore receiving LPV/r 200-100 mg twice daily for 14 days. Three patients had reductions in ventilation requirements within 3 days of treatment initiation, whereas two had progressive respiratory failure. Despite the lower dosing regimen compared with previous studies, four out of the five patients had premature treatment discontinuation secondary to nausea, vomiting, diarrhea, and increased liver function tests. There were no deaths in the study, but efficacy outcomes are difficult to interpret based on the lower dosing strategy compared to previous data. This does raise concerns about the potential tolerability of the higher dose regimen.⁴⁹ Another retrospective cohort showed that LPV/r has limited influence on the duration of viral shedding, which can occur for a median of 20 days after initially contracting the virus.^{49,50} In a recent randomized, controlled, open label trial including hospitalized patients with SARS-CoV-2 infection, patients receiving LPV/r 400 -100 mg twice daily for 14 days versus standard of care found no benefit versus standard of care treatment.⁵¹ There are multiple ongoing studies evaluating the clinical utility of LPV/r as monotherapy and in combination with other therapies such as ribavirin and interferon (IFN).⁵²⁻⁵⁴

Dosing and Pharmacokinetics

LPV/r is available as a single tablet formulation (Kaletra®) in dosage strengths of 400/100 mg or 200/100 mg. Given the largest available evidence from *in vitro* studies, if LPV/r is used as an adjunctive agent for COVID-19, a dose of 400 mg/100 mg by mouth twice daily for 14 days is recommended. LPV/r is highly protein bound (~98%) and its primary pathway for elimination is through the hepatobiliary system. No dose adjustments are required for renal impairment. In patients receiving intermittent hemodialysis, however, once daily dosing is not recommended when indicated for treatment of HIV. This does not influence use in COVID-19 since the recommended schedule is twice daily.⁴³ No dosage adjustments are recommended in hepatic impairment, but caution should be advised if used in patients with advanced liver disease.⁵⁵ Lower dosages of 200/100 mg twice daily can be considered where adverse effects limit tolerability, with the understanding that lower doses may not substantially mitigate toxicities. Based on information collected by the Antiretroviral Pregnancy Registry, an increased risk of teratogenic effects has not been observed in humans. The Health and Human Services perinatal HIV guidelines consider LPV/r a therapeutic option for pregnant females living with HIV and can be continued if conception occurs during therapy.⁵⁶

The considerable potential for drug-drug interactions with LPV/r requires a thorough review of concomitant medications. Ritonavir is a strong inhibitor of CYP3A4, a major enzyme responsible for the metabolism and elimination of many medications. In addition, ritonavir is a moderate inhibitor of p-glycoprotein (P-gp), organic anion transporter (OATP1B1), OATP1B3, and is an inducer of UGT.⁵⁵ Patients requiring ICU admission for COVID-19 are often elderly with multiple comorbidities and polypharmacy. The potential therapeutic benefit of LPV/r should be weighed against considerable interactions with commonly used medications in ICU (midazolam, fentanyl, antiarrhythmics).³

Adverse Effects

Treatment with LPV/r may result in intolerable gastrointestinal toxicities, though administration with food may ameliorate the severity of these symptoms. Up to 24% of patients experience diarrhea though this usually improves within 2 weeks.⁵⁵ Adverse events particularly relevant to ICU patients include potentially

fatal pancreatitis, hepatitis, hepatic decompensation among those with pre-existing liver disease, and increased PR intervals, especially in those with congenital QTc prolongation.⁵⁵

Previous studies using LPV/r for SARS demonstrated increased serum amylase and liver enzyme elevations compared to a matched cohort. Routine monitoring of liver function tests is critical and supportive care with antiemetics and antimotility agents should be considered.⁴⁴ Cardiovascular and metabolic toxicities such as lipid abnormalities are commonly observed in patients with HIV receiving these therapies for prolonged periods; these are less likely when used for the abbreviated durations for COVID-19.

Administration Considerations

LPV/r tablets should not be chewed or crushed for patients unable to swallow.⁵⁵ In patients who are intubated or have limited oral access, an oral suspension is available for delivery via a nasogastric tube.⁵⁵ It should be noted that the suspension does contain 42.4% ethanol. Available data suggests administration with enteral nutrition does not adversely impact drug concentrations.⁵⁷ Co-administration with food that contains a moderate to high fat content can enhance LPV/r bioavailability.⁵⁵

Ribavirin

Therapeutic Uses

Ribavirin is a purine nucleoside analog that elicits its antiviral effect through inhibition of viral RNA synthesis. Ribavirin is a prodrug that undergoes metabolic conversion by the liver, after which its metabolic structure closely mimics the purine analogue guanosine which enhances its incorporation into RNA. The structural elements prohibit the subsequent addition of nucleoside analogues, effectively halting the synthesis of RNA.⁵⁸ RNA is ubiquitous in many viruses, which is why ribavirin has been studied in a broad range of viral diseases including hepatitis B, C, and respiratory syncytial virus.⁵⁹

Rationale for Proposed Therapy

The non-selective antiviral properties of ribavirin have prompted investigators to evaluate its use during the SARS and MERS outbreaks. During the initial SARS outbreak, ribavirin was used throughout Hong Kong in both oral and intravenous formulations.⁶⁰ However, the distribution of the intravenous formulation, which is not available in all countries including the United States, was restricted in the midst of the epidemic given the concern for lack of *in vitro* susceptibility and considerable toxicity. In 126 cases treated with ribavirin, hemolysis and anemia occurred in up to 76% and 49% of cases respectively.^{61,62} *In vivo* data suggests serum concentrations of ribavirin needed to effectively blunt viral replication is higher than what is safely achievable in humans.⁶¹ *In vitro* data suggests rapid resistance against SARS and MERS when used as a monotherapy, but potential activity when combined with other antivirals such as LPV/r or chloroquine analogues.^{38,63} Outcomes for ribavirin use in combination with IFN alpha 2a for MERS-CoV is discussed in the IFN section.

Dosing and Pharmacokinetics

Ribavirin is commercially available as an oral capsule, oral solution, and inhaled formulation.⁵⁹ The inhaled formulation has not been studied for SARS, MERS, or COVID-19, and the intravenous form is not available in the United States. Oral ribavirin has been dosed as a 4-gram loading dose followed by 1.2 grams every eight hours in two small studies for SARS.^{44,64} In the management of COVID-19, data is limited to ongoing studies using a dosing strategy of 400 mg by mouth twice daily for 14 days as a part of a combination regimen.

Ribavirin has a prolonged half-life of approximately 40 days. Loading doses may aid in achieving steady state more rapidly.⁶⁵ Ribavirin is metabolized to its active form via extra-hepatic enzymes.⁵⁹ However, its use in hepatic impairment Child-Pugh class B and C is not recommended given that it is metabolized by CYP enzyme pathways. Ribavirin is eliminated primarily by renal excretion, requiring strict dose reductions for renal insufficiency, which varies based on indication.⁵⁹ A review on the use of ribavirin in SARS recommended a 50% dose reduction for CrCl between 30-50 mL/min, and 75% reduction for CrCl of <30 mL/min.⁶⁵ There is no established safety of ribavirin in patients receiving renal replacement therapy; it should be restricted to those with stable renal function.

Adverse Effects

Ribavirin carries a boxed warning for hemolytic anemia.⁵⁹ In a study assessing the adverse effects associated with the use of ribavirin use for SARS, the most common adverse effects were hemolytic anemia (61%), hypocalcemia (58%) and hypomagnesemia (46%).⁶⁶ The onset of hemolytic anemia occurs as early as 3-5 days after therapy with high doses (>1-2g), which have been used as loading doses for coronavirus.^{44,67} The risk is highest in patients who are elderly or have poor renal function, but consideration should also be taken in patients with preexisting cardiac disease where reduction in hemoglobin increases the risk of decompensation.⁵⁹ Ribavirin is a teratogen with a significant potential for embryonic toxicity and is contraindicated in women who are pregnant and in male partners of women who are pregnant. If ribavirin is considered in women or men of childbearing potential, use of systemic and barrier contraception must be strictly enforced. Since active metabolites of ribavirin persist in plasma for up to 6 months, contraception is required both during treatment and for at least 6 months after treatment is completed.⁵⁹

Ribavirin does not have drug-drug interactions since its metabolism and elimination does not rely on the CYP450 system. However, there are therapies that should be used cautiously with ribavirin due to the potential for enhanced toxicities. Ribavirin in combination with other immunosuppressive therapies, particularly azathioprine or IFN can lead to severe pancytopenia.⁵⁹

Administration Considerations

Ribavirin administered orally as a solution or capsule has an absolute bioavailability of 40%-50% compared to the intravenous or as an aerosol formulation.⁵⁹ Oral formulations have enhanced bioavailability when taken with a high fat meal and it is recommended to administer both oral formulations with food. Due to the teratogenic potential of ribavirin, it has been identified as a hazardous medication on the National Institute for Occupational Safety and Health (NIOSH) list and requires significant safety precautions with its use. The capsules should not be opened, crushed, or broken.⁵⁹ Health care providers handling ribavirin must also follow NIOSH recommendations to wear gloves when packaging, administering, or receiving intact capsules. When handling the solution, double gloving, a protective gown, and eye/face protection is required, especially for administration of the oral liquid through a feeding tube.

Nitazoxanide

Therapeutic Uses

Nitazoxanide is a 2-(acetyloxy)-N-(5-nitro-2-thiazolyl) benzamide with an approved Food and Drug Administration (FDA) approved indication for its antiprotozoal activity to treat diarrhea caused by *Giardia parvum* and *Giardia lamblia*.⁶⁸ Nitazoxanide has since been found to have activity against *Cryptosporidium* and *in vitro* activity against anaerobic Gram-positive and Gram-negative bacteria.^{69,70} Another studied use of nitazoxanide has been for the treatment of influenza.⁷¹ When nitazoxanide was studied for severe acute respiratory illness, no benefit was seen in clinical outcomes, specifically length of hospital stays.⁷²

Mechanism of Action

Nitazoxanide interferes with pyruvate ferredoxin oxidoreductase enzyme dependent electron transfer thus impairing anaerobic energy metabolism of protozoa.⁶⁸ Nitazoxanide is metabolized to its active circulating metabolite tizoxanide.⁷³ Tizoxanide selectively blocks the post-translational influenza viral hemagglutinin maturation and intracellular movement in addition to blocking protein implantation into the plasma membrane.⁷⁴ Nitazoxanide may potentiate the production of type 1 IFNs produced by host cell fibroblasts, which may potentiate antiviral activity via hemagglutinin inhibition.⁷⁵

Rationale for Proposed Therapy

Nitazoxanide has demonstrated *in vitro* activity against MERS-CoV.⁷¹ An anti-coronavirus effect was observed with nitazoxanide in an *in vitro* screen of small molecules against a recombinant murine coronavirus.⁷⁶ *In vitro* studies of canine coronavirus found that the use of nitazoxanide inhibited viral replication.⁷¹ Based on this *in vitro* animal data, it is thought that nitazoxanide may have activity against SARS-CoV-2. Human data is limited regarding the efficacy of nitazoxanide against human coronavirus. In a 260-patient double-blind, placebo-controlled trial in patients with influenza-like illness, 5 participants who received nitazoxanide were coronavirus positive.⁷² Sub-group analysis of these 5 coronavirus positive patients found no difference in the primary outcome of days of hospitalization (p=0.61).

Dosing and Pharmacokinetics

The recommended nitazoxanide dosing for *Cryptosporidium parvum* or *Giardia lamblia* is 500 mg oral suspension or tablet every 12 hours for 3 days.⁶⁸ The dosing used for acute respiratory illness was twice daily for 5 days and strength of doses were based on age. Patients 12 years of age and older received two 300 mg tablets, 4-11 years old received 200 mg of the suspension and 1-3 years old received 100 mg of the suspension.⁷²

It is recommended that nitazoxanide be administered with food as pharmacokinetic studies found increased area under the curve (AUC) and maximum concentration (C_{max}) of tizoxanide.⁶⁸ Specifically, a doubling of AUC and 50% increase of C_{max} was observed when the tablet was administered with food. When the suspension was administered with food there was a 45-50% increase in AUC and up to 10% increase in C_{max} . An important consideration is that the oral suspension is not bioequivalent to the tablet. The suspension has a bioavailability of 70%, necessitating dose adjustments when transitioning between these dosage forms.⁶⁸ In plasma, tizoxanide is more than 99% bound to proteins. Metabolism of nitazoxanide to tizoxanide occurs via hydrolysis and then conjugation via glucuronidation. Nitazoxanide has not been studied in patients with impaired renal and hepatic function and no dosage adjustment recommendations exist.⁶⁸ Data in geriatric and pediatric populations are not available.

Adverse Effects

The most common adverse effects of nitazoxanide are gastrointestinal, mainly abdominal pain, nausea, and headache. Patients may also experience discoloration of eyes and urine, diarrhea, dizziness, gastroesophageal reflux disease, skin rash, or urticaria. Compared to patients receiving standard of care and placebo, patients receiving nitazoxanide did not have additional adverse effects and both groups of patients experienced gastrointestinal and respiratory effects.⁷² Headache and diarrhea were reported most in patients receiving placebo vs. low dose nitazoxanide versus high dose nitazoxanide for treatment of viral respiratory infection with no significant difference between all three groups.⁷⁷

Administration Considerations

Nitazoxanide is available in dosage forms administered enterally including a controlled release film coated tablet and oral suspension. Nitazoxanide tablets can be crushed and mixed with food. There is no existing data regarding the absorption of nitazoxanide when administered via gastric feeding tubes. However, if gastric feeding tube administration is needed, the oral suspension can be used.

Drug-drug interactions with nitazoxanide are not attributed to cytochrome CYP enzymes, as *in vitro* metabolism data found no significant effect of nitazoxanide on these enzyme pathways.⁶⁸ Most notably, nitazoxanide may have binding site competition with other highly protein bound drugs. A narrow therapeutic index drug that would be of concern in this case is warfarin. However, a pharmacokinetic study where patients received nitazoxanide twice daily for 6 days with a one-time warfarin 25 mg dose compared to patients receiving warfarin did not result in pharmacokinetic or dynamic changes and was well tolerated.⁷⁸

Nelfinavir

Therapeutic Uses

Nelfinavir is a HIV-1 protease inhibitor originally developed for use in combination with antivirals that target HIV via alternate mechanisms. With development of newer combination antivirals for HIV, nelfinavir has fallen out of favor for this indication.⁷⁹

Mechanism of Action

Nelfinavir binds to the site of HIV-1 protease activity and inhibits cleavage of viral Gag-Pol polyprotein precursors into functional proteins that are needed for HIV. What remains are non-viable HIV virus particles that are no longer infectious.

Rationale for Proposed Therapy

During the 2002 SARS outbreak nelfinavir was identified as a potential agent with activity against SARS-CoV based on *in vitro* studies.⁸⁰ Nelfinavir was found to inhibit the replication of SARS-CoV in Vero E6 cells

originating from the African green monkey. Most recently, nelfinavir was identified via homology models based on 3 dimensional SARS structures specifically at the main protease or chymotrypsin-like protease.⁸¹ These models assessed the ability of small molecule drugs to dock to the SARS structures. The SARS-CoV was used since its sequence is 96% similar to that of SARS-CoV-2. Of 30 drugs assessed, nelfinavir was found to have the most promising activity against SARS-CoV-2.

Dosing and Pharmacokinetics

Nelfinavir has not been studied in humans for its efficacy against SARS-CoV or SARS-CoV-2. The recommended dosing of nelfinavir for the treatment of HIV is 750 mg by mouth three times daily or 1250 mg by mouth twice daily. The half-life of nelfinavir is 3.5-5 hours. The effective dose for treatment of COVID-19 is unknown. Nelfinavir dosage adjustments do not need to be made with renal impairment as less than 2% of nelfinavir is excreted in the urine.⁸² For patients with hepatic impairment nelfinavir is not recommended in patients with Child Pugh class B or C.^{79,83,84} Pharmacokinetics in patients using nelfinavir with chronic liver disease may be unpredictable.⁸⁵ No dosage adjustments are recommended for use in patients with Child Pugh class A impairment.

Nelfinavir is metabolized by CYP3A4 and CYP2C19 and could potentially interact with medication that are inhibitors or inducers of these enzymes. *In vitro* data found that only CYP3A enzymes were inhibited by nelfinavir at therapeutic concentrations.⁸²

Adverse Effects

The major adverse effect of nelfinavir is gastrointestinal intolerance, primarily diarrhea, nausea and flatulence. Non-specific rash may also occur. The incidence of other side effects are minimal, occurring less than 2% of the time in phase 2 and 3 trials.⁸²

Administration Considerations

Nelfinavir is available in a tablet dosage form. The 250 mg tablets can be dissolved in water and readily dissolves. For patients with a gastric tube as enteral access, nelfinavir can be crushed, dissolved in water, and administered via gastric tube. After dissolving, nelfinavir should be taken or administered immediately. Notably, nelfinavir may have a bitter taste if mixed with acidic food or juice.⁸²

Absorption of nelfinavir has been found to result in less pharmacokinetic variability and higher nelfinavir levels when taken with food. Nelfinavir has a volume of distribution of 2-7 L/kg and is highly protein bound (>98%).⁸²

Immune Modulating Therapeutics

Interferon (IFN) alfa

Therapeutic Uses

IFNs are endogenous signaling proteins released by host cells during response to infections or inflammation. Upregulation of IFNs stimulates the immune system to blunt viral replication and eradicate offending pathogens.⁸⁶ There are two IFNs that mediate host immune responses, alpha and beta. IFN alpha elicits a potent host mediated immune cell response which has generated interest in the treatment of viral diseases such as hepatitis B and C and various cancers such as melanoma and chronic lymphocytic leukemia. IFN beta has been primarily used in the treatment of the autoimmune condition multiple sclerosis.⁸⁷ These non-specific immunomodulatory effects have gained attraction by investigators for other viral illnesses including COVID-19.

Mechanism of Action

During the 2002 SARS outbreak, it was observed that after viral inoculation, SARS-CoV was able to effectively evade upregulation of IFNs in human macrophages. This allowed for continued viral replication due to suppression of the innate immune response.⁸⁷ Two IFN products are available, alpha and beta. It is currently

unknown whether both products would influence coronavirus disease expression. IFN alpha has the most studies related to its use.

Rationale for Proposed Therapy

Thus far, human data for the use of IFN alpha for novel coronaviruses is sparse. During the SARS outbreak, pegylated IFN alpha was assessed in an *in vitro* analysis of macaque cells at different periods of SARS exposure.⁸⁸ When used prior to SARS inoculation, IFN alpha reduced viral replication and excretion. However these results were not observed post-SARS exposure.⁸⁸ An *in vitro* analysis assessing IFN-alpha as monotherapy for MERS demonstrated the serum concentrations required to effectively inhibit viral replication were higher than what can be safely achieved in humans.⁶³ Nevertheless, *in vitro* isolates of IFN alpha or beta as a multimodal regimen with ribavirin for SARS displayed potent synergy against the virus.^{89,90} *In vivo* studies have yet to be able to replicate the same benefits, with some studies showing no influence on the disease course for MERS while others suggests a small improvement in survival at 14 days but not 28 days when used in combination with ribavirin.^{91,92} These viruses may display different *in vitro* and *in vivo* susceptibilities than the current SARS-CoV-2; extrapolation to the current COVID-19 pandemic is difficult. This has not dampened the potential application of this therapy, and investigators await the results of ongoing studies assessing the efficacy of IFN alpha 2b as a part of combination therapy with ribavirin for COVID-19 to further elucidate any benefit from IFN treatment.^{93,94}

Dosing and Pharmacokinetics

IFN alpha 2b also comes as a pegylated form to prolong its half-life from 4.6 hours to 22-60 hours, permitting a lower dosing frequency.⁸⁷ Due to the lack of established human data with IFNs for COVID-19, this therapy should only be considered for COVID-19 as a part of a clinical trial. There is no established dosing regimen for IFN in the treatment of COVID-19. The only *in vivo* data is with IFN alpha 2a for the treatment of MERS using a dose of 180 µg per week for 2 weeks, similar to hepatitis B virus.⁹² There is no established dosing regimen for IFN in the treatment of COVID-19. The only study currently recruiting at the time of this publication is using IFN beta1b at a dose of 0.25mg (8 million IU) on day 1, 3 and 5 in combination with other therapies (ribavirin, LPV/r).⁹³ Additional studies evaluating IFN alpha 1b are evaluating its utility as an inhaled therapy.⁹⁴

Accepted Article

If used as a part of a trial, there are key clinical considerations to consider for safe use. The drug labeling provides a cautionary statement for use in Child Pugh B or C.⁸⁷ Renal elimination accounts for 30% of total clearance. Dose reductions are required for patients with a CrCl <50 mL/min when IFN alpha is used in combination with ribavirin for hepatitis C.⁸⁷ Given these agents are both under investigation for COVID-19, if used as a part of combination therapy, the same precaution should be considered. IFN therapies have increased risk of adverse effects when used during renal replacement therapy, thus caution is recommended in this population.^{95,96}

IFN does not pose a risk of drug-drug interactions through CYP enzyme pathways. Concomitant medications that enhance the myelosuppressive or hepatotoxic effects of IFN should be used sparingly.⁸⁷

Adverse Effects

IFNs are associated with significant adverse reactions, even when used as a short term therapy. Injection site reactions resulting in flu-like symptoms (fever, myalgias, and headaches) occur within the first 2-8 hours after administration. Rotation of injection sites, application of ice prior to and after application and premedication with acetaminophen can mitigate these reactions. Additional adverse reactions include leukopenia, lymphopenia, autoimmune hepatitis, and thyroid disease. Patients exposed to IFNs for currently approved indications can develop neutralizing antibodies that reduce the therapeutic efficacy of this agent. The development of neuropsychiatric adverse effects is not expected to occur with short term use.⁹⁷ The safety of IFN in pregnancy has not been established.⁸⁷

Administration Considerations

IFN is available in injectable and inhaled formulations. The current study is enrolling patients using beta 1b subcutaneously injected in the abdomen or thigh.⁹³

Baricitinib

Therapeutic Uses

Baricitinib is a janus kinase (JAK) inhibitor originally developed for the treatment of rheumatoid arthritis. It is FDA-approved for moderate or severe active rheumatoid arthritis in patients who have not responded to one or more tumor necrosis factor antagonists.

Mechanism of Action

Baricitinib reversibly and selectively inhibits JAK1 and JAK2 with less inhibition of JAK3 and tyrosine kinase. Inhibition of JAK results in inability of signal transmission from cytokine or growth receptors resulting in decreased hematopoiesis and immune cell function.⁹⁸ This inhibition of signal transmission prevents phosphorylation and thus activation of signal transducers and activators of transcription. Baricitinib has a high affinity for associated protein kinase 1 (AAK1) binding and could prevent the intracellular passage of viral cells and development of viral particles.⁹⁹

Rationale for Proposed Therapy

COVID-19 may result in secondary hemophagocytic lymphohistiocytosis (sHLH) as a result of viral infection.¹⁰⁰ Patients with COVID-19 have exhibited ferritin and inflammatory marker elevations similar to sHLH including elevated interleukin (IL)-2, IL-7, granulocyte stimulating factor, and tumor necrosis factor (TNF)-alpha. Evaluation of risk factors for mortality of COVID-19 cases in Wuhan found ferritin and IL-6 levels to be higher in those that ultimately died versus survivors ($p < 0.001$).¹⁰¹ Considering the potential for increased lung injury with corticosteroid use in patients with COVID-19 and reported use of tocilizumab for COVID-19, JAK-STAT inhibitors have been theorized to have an effect on the hyperinflammatory state that occurs in COVID-19. Baricitinib may also prevent endocytosis and viral infection by inhibiting AAK1 activity. Baricitinib has not been studied in humans for COVID-19.

Dosing and Pharmacokinetics

Baricitinib is typically dosed as 2 mg by mouth daily for rheumatoid arthritis.⁹⁸ No data exists for treatment of COVID-19 however it is proposed that a 7-14 day course would be needed.¹⁰² Dose adjustments are recommended for patients with lymphopenia, neutropenia, and anemia.⁹⁸ It is recommended to hold baricitinib in patients with an absolute lymphocyte count less than 500 cells/mm², an absolute neutrophil count less than 1000 cells/mm², and hemoglobin less than 8 g/dL. In patients with hepatic impairment, baricitinib is not recommended. Dose adjustments are recommended with renal impairment. For patients with an estimated glomerular filtration rate (eGFR) less than 30 mL/min/1.73m² it is recommended to hold baricitinib. For patients with an eGFR 30-60 mL/min/1.73m² it is recommended to decrease dose to 1 mg once daily. There are no dosing recommendations for patients requiring continuous renal replacement therapy.

Baricitinib reaches peak concentrations within 1 hour of oral administration with steady state achieved at 2-3 days.⁹⁸ Baricitinib has an oral bioavailability of 80% and is not significantly impacted by taking with or without food. The baricitinib volume of distribution is 76L and it is 50% bound to plasma proteins and 45% bound to serum proteins. It is a substrate of P-gp, breast cancer resistance protein, OAT, and multidrug and toxin extrusion protein transporters. Metabolism of baricitinib occurs mainly by CYP3A4 and elimination is approximately 75% renal.

Relevant drug-drug interactions with baricitinib include strong OAT 3 inhibitors which may increase baricitinib exposure.⁹⁸ For patients concomitantly taking strong OAT 3 inhibitors the recommended dose of baricitinib is 1 mg once daily.

Adverse Effects

Several boxed warnings exist for baricitinib including risk of infection, particularly upper respiratory tract infection, malignancy, and thrombosis.⁹⁸ Of note, these side effects were higher in patients receiving the 4 mg dose of baricitinib, which is not a recommended dose due to these safety concerns. Patients in clinical trials also experienced increased incidence of neutropenia, platelet elevations, aminotransferase elevations, lipid elevations, creatinine elevations, and creatine phosphokinase elevations, and nausea. Monitoring for long term treatment of rheumatoid arthritis is recommended with baseline complete blood counts, including

neutrophils, liver function tests, and lipids.⁹⁸ Monitoring for signs and symptoms of infection while treating with baricitinib is recommended in addition to skin examinations in patients at an increased risk for skin cancer.

Administration Considerations

Baricitinib is available as a film-coated immediate release tablet for enteral administration.⁹⁸ It can be given with or without consideration of food. There is no data regarding crushing baricitinib and administration via gastric feeding tubes. Although baricitinib is not on the NIOSH list of medications, it is carcinogenic by virtue of the adverse effect profile and it may be treated as a hazardous drug.

Tocilizumab

Therapeutic Uses

Tocilizumab is a monoclonal antibody with FDA approval for chimeric antigen receptor (CAR)-T cell-induced cytokine release syndrome (CRS), giant cell arteritis, rheumatoid arthritis, and polyarticular or systemic juvenile idiopathic arthritis.¹⁰³

Mechanism of Action

Evolving data suggests patients with severe COVID-19 experience significant lung injury secondary to a surge of inflammatory cytokines, resulting in a cytokine storm. Viral replication activates the innate immune system to secrete various signaling proteins such as (ILs) that results in hyperinflammation and further lung damage. IL-6 is a key inflammatory protein involved in this pathway.¹⁰⁰ Tocilizumab binds to IL-6 receptors thereby blunting cell signaling and effectively down regulating the excess inflammatory response.¹⁰³

Rationale for Proposed Therapy

The rationale for use of tocilizumab in COVID-19 stems from data discovered with SARS and MERS. SARS patients were noted to have CRS as a result of pro-inflammatory marker release including IL-6 and TNF- α .¹⁰⁴ MERS patients were discovered to have elevations of IL-6, IL-8, and IL-1 β .¹⁰⁵ The data from Wuhan in critically ill patients with COVID-19 have also found increased levels of cytokines including IL-6 and granulocyte-colony stimulating factor (G-CSF).^{8,106} Lung tissue obtained post-mortem from a patient with COVID-19 showed elevated inflammatory factors suggestive of cytokine storm.¹⁰⁷ IL-6 may be a key driver of the robust inflammatory response within the lungs of ICU patients with COVID-19. Recently published data from Wuhan indicates that tocilizumab added to lopinavir, methylprednisolone, and oxygen therapy in 20 patients with severe COVID-19 resulted in rapid reductions in fever in all patients, improvement in oxygenation for 75%, and facilitated discharged from the hospital in 95% of patients.¹⁰⁸ Additional studies are underway with tocilizumab combined with other antivirals or compared against renal replacement therapy for management of CRS associated with COVID-19.^{109,110} Sarilumab, another anti-IL6 antibody, is currently under evaluation for the treatment of COVID-19. It will be studied against supportive care measures and provide enhanced insight into the utility of targeting this pathway.¹¹¹

Dosing and Pharmacokinetics

Tocilizumab for most indications is weight-based with a maximum dose of 800mg. The dosing of tocilizumab for COVID-19 is not well established. When used in a case series of patients with COVID-19, a one-time dose of intravenous tocilizumab 400 mg was administered.^{108,112} For CRS secondary to CAR-T cell therapy, 3 additional doses of tocilizumab can be given with at least 8 hours between each dose. In the COVID-19 reports, three patients received an additional dose of tocilizumab 12 hours later as a result of continued fevers.¹⁰⁸

Tocilizumab AUC varies based on body weight, and the volume of distribution of intravenous tocilizumab at steady state is 6.4 L.¹⁰³ There are no published data regarding the use of tocilizumab 400 mg in obese patients with COVID-19 and whether the 400 mg dose is adequate. The half-life of tocilizumab is concentration dependent, at 11 days when dosed 4 mg/kg and 13 days when dosed 8mg/kg. Tocilizumab should be held when the absolute neutrophil count is <1000 cells/mm², platelet count is <100,000 cells/mm², or liver enzymes are > 3-5 times the upper limit of normal. This is particularly relevant for the treatment of COVID-19

which has been demonstrated to elevate liver enzymes in severe cases.¹¹³ Tocilizumab elimination is not influenced by renal dysfunction. No dose adjustments are required. In patients receiving tocilizumab for COVID-19, only one patient had a history of chronic kidney disease and no patients had reported hepatic impairment.¹⁰⁸

Adverse Effects

Limited efficacy data with tocilizumab should be weighed against its significant cost and potential for toxicities. Secondary to interference with the host immune response, infections ranging from bacterial, viral and fungal may develop.¹⁰³ Patients should be screened for active or latent tuberculosis infection prior to administering tocilizumab. Gastrointestinal perforation after the use of tocilizumab has been reported in patients that with a history of diverticulitis or receiving high dose corticosteroids.¹⁰³ Infusion reactions causing hypertension, headache, and skin reactions within 24 hours of administration have been reported after administration of tocilizumab.¹⁰³

Administration Considerations

Tocilizumab is recommended to be administered intravenously over 1 hour.^{112,103} Tocilizumab should not be administered in the same line with other medications, as it has not been studied for compatibility.¹⁰³

Pertinent drug-drug interactions with tocilizumab may occur as a result of increased CYP450 enzyme activity. *In vitro* studies reported that tocilizumab may increase CYP1A2, CYP2B6, CYP2C9, CYP2C19, CYP2D6, CYP3A4 activity. *In vivo* studies have reported that tocilizumab may interact with simvastatin via increased activity of CYP3A4, resulting in decreased simvastatin exposure. Findings were also similar when omeprazole and tocilizumab were combined, resulting in decreased omeprazole AUC through increase CYP19 activity.

Convalescent Plasma Therapy

Passive immunity delivered as anti-coronavirus antibodies from convalescent human plasma may offer a novel therapeutic approach for COVID-19. The proposed mechanism of benefit from convalescent human plasma derived from survivors of the coronavirus is the transfer of passive immunity in an effort to restore the immune system during critical illness and neutralize the virus to suppress viremia.¹¹⁴ The main driver for

the investigation of convalescent human blood products in the treatment of COVID-19 originated from its use in the H1N1 pandemic, during which patients derived a clinically significant mortality benefit and improved viral clearance from convalescent blood products.¹¹⁵

In a retrospective review of 40 patients with SARS who failed treatment with methylprednisolone and ribavirin at 3 days, 74% of patients who received convalescent plasma (n =19) were discharged by day 22 compared to only 19% of patients who received high-dose corticosteroids (n =21) ($p<0.001$). Five deaths were reported in the steroid group compared to no deaths with convalescent plasma. To obtain the greatest benefit from convalescent plasma treatment should be employed early in the course of disease (before day 16), as viremia from SARS has been shown to peak in the first week of treatment followed by a primary immune response by days 10 to 14.¹¹⁶ Preliminary data from on-going convalescent plasma therapy data in COVID-19 outbreak suggests improvement in clinical symptoms with no signal of adverse effects.¹¹⁷

Targeted anti-SARS-CoV-2 antibodies that allow for a more selective therapy against coronavirus are in development and some companies have begun active recruitment for investigation into its clinical efficacy and safety treatment of COVID-19.¹¹⁸ Takeda Pharmaceutical has announced investigation into a new plasma derived therapy coined TAK-888. This plasma-derived therapy involves removing plasma from COVID-19 survivors, extracting coronavirus-specific antibodies to administer to infected patients to stimulate a potent immune response against SARS-CoV-2. Convalescent therapy remains in the experimental phase but appears it may favorably influence the treatment course and enrollment of patients into a clinical trial will aid in defining its role in therapy.

Corticosteroids

Given lack of efficacy and risk of delayed viral clearance, the World Health Organization consensus document on the management of COVID-19 strongly recommends against the use of corticosteroids unless alternative indications are present. Acute lung injury and respiratory distress syndrome secondary to systemic inflammation are well characterized sequelae of SARS and MERS outbreaks with pulmonary histology demonstrating evidence of inflammation and diffuse alveolar damage.¹¹⁹ Corticosteroids were proposed to be of benefit in suppression of lung inflammation in MERS and SARS due to their immunomodulatory

properties. However, clinical data is now clear that patients derive no benefit from corticosteroids in management of SARS, MERS, or COVID-19 but have instead demonstrated evidence of increased risk of harm including prolonged mechanical ventilation, avascular necrosis, delayed viral clearance, and secondary infections.^{120,121} A retrospective observational study of critically ill patients with MERS, who received hydrocortisone 300 mg per day did not find a 90-day mortality benefit (adjusted odds ratio 0.8, 95% CI 0.5-1.1, $p < 0.12$) but did find delayed viral clearance (adjusted HR 0.4, 95% CI 0.2-0.7, $p < 0.0005$).¹²² The lack of survival benefit has been further supported by a systematic review of corticosteroids in patients with SARS, but showed an increased risk of psychosis, avascular necrosis, prolonged viremia, and hyperglycemia with corticosteroid treatment.¹²⁰ Although severe, potentially life-threatening ARDS can occur, generalizing the evidence for corticosteroids to the COVID-19 associated ARDS is problematic and fails to account for the differing pathogenesis of viral-induced lung injury.¹²¹ Corticosteroids should only be considered if required for an alternative indication (i.e., septic shock, bronchoconstriction). Despite the lack of benefit defined in previous trials, a clinical trial is actively recruiting to assess the efficacy and safety of methylprednisolone 1 mg/kg/day for a duration of 7 days in non-critically ill patients is under investigation to further identify the risks and benefits of therapy.¹²³

Other Emerging Therapies for Treatment of COVID-19

In addition to the drug therapies discussed above, several additional drugs are being evaluated as potential therapies for COVID-19 in clinical trials. Arbidol, a drug used in Russia and China for prophylaxis and treatment of influenza and respiratory viral infections, works by blocking viral fusion to target cell membrane and has demonstrated activity against several viruses including SARS-¹²⁴ Arbidol is currently being evaluated for the treatment of COVID-19 in several studies in China and is currently a recommended treatment option for COVID-19 in China. Arbidol is not available in the United States. Favipiravir, a drug licensed in Japan for treatment of influenza, is another potential agent due to its activity against a wide spectrum of RNA viruses, including coronaviruses.¹²⁵ Several studies are underway evaluating favipiravir for treatment of COVID-19. Other antiviral agents that are being evaluated in China for treatment of COVID-19 include antiretroviral agents darunavir/cobicistat and emtricitabine/tenofovir alafenamide, as well as the influenza drug baloxavir. Finally, oseltamivir, a neuraminidase inhibitor used for treatment of influenza, is also being studied for

treatment of COVID-19. However, oseltamivir is unlikely to be active against SARS-CoV-2 based on previous studies with SARS-CoV.⁶¹

Drugs to decrease the inflammation associated with COVID-19 are also being evaluated. One of these drugs is thalidomide, which may decrease inflammation through its anti-inflammatory and immunomodulatory effects.¹²⁶

Conclusions

The COVID-19 pandemic has presented an enormous global health crisis. The pharmaceutical industry is working to develop novel treatments targeted at SARS-CoV-2. In the meantime, the medical community is trialing a variety of therapies that target different antiviral and immune-modulating mechanisms to combat this virus. Some of the drugs are investigational, and some are old drugs being repurposed for a new pathogen. As we gain more information both about the effectiveness of the drugs against SARS-CoV-2 and their pharmacokinetics, especially in the complex setting of critical illness, we will be better equipped to optimize therapeutic strategies.

Figure 1 Legend

JAK = Janus Kinase, STAT = signal transducer and activator proteins, IFN = interferon, IL-6 = interleukin 6,
COVID = coronavirus, CYP3A4 = cytochrome 3A4, RNA = ribonucleic acid

Accepted Article

References

1. Velavan TP, Meyer CG. The COVID-19 epidemic. *Trop Med Int Health TM IH*. 2020;25(3):278–80.
2. Lipsitch M, Swerdlow DL, Finelli L. Defining the Epidemiology of Covid-19 - Studies Needed. *N Engl J Med*. 2020.
3. Huang C, Wang Y, Li X, Ren L, Zhao J, Hu Y, Zhang L, Fan G, Xu J, Gu X, Cheng Z, Yu T, Xia J, Wei Y, Wu W, Xie X, Yin W, Li H, Liu M, Xiao Y, Gao H, Guo L, Xie J, Wang G, Jiang R, Gao Z, Jin Q, Wang J, Cao B. Clinical features of patients infected with 2019 novel coronavirus in Wuhan, China. *Lancet*. 2020;395(10223):497–506.
4. Wei J, Xu H, Xiong J, Shen Q, Fan B, Ye C, Dong W, Hu F. 2019 Novel Coronavirus (COVID-19) Pneumonia: Serial Computed Tomography Findings [published online ahead of print Feb 26, 2020]. *Korean J Radiol*. doi: 10.3348/kjr.2020.0112
5. Ai T, Yang Z, Hou H, Zhan C, Chen C, Lv W, Tao Q, Sun Z, Xia L. Correlation of Chest CT and RT-PCR Testing in Coronavirus Disease 2019 (COVID-19) in China: A Report of 1014 Cases [published online ahead of print Feb 26, 2020]. *Radiology*. Doi: 10.1148/radiol.2020200642
6. Dong L, Hu S, Gao J. Discovering drugs to treat coronavirus disease 2019 (COVID-19). *Drug Discov Ther*. 2020;14(1):58–60.
7. Ashour HM, Elkhatib WF, Rahman MM, Elshabrawy HA. Insights into the Recent 2019 Novel Coronavirus (SARS-CoV-2) in Light of Past Human Coronavirus Outbreaks. *Pathog Basel Switz*. 2020;9(3).
8. Wang D, Hu B, Hu C, Zhu F, Liu X, Zhang J, Wang B, Xiang H, Cheng Z, Xiong Y, Zhao Y, Li Y, Wang X, Peng Z. Clinical Characteristics of 138 Hospitalized Patients With 2019 Novel Coronavirus-Infected Pneumonia in Wuhan, China [published online ahead of print Feb 7 2020]. *JAMA*. doi:10.1001/jama.2020.1585
9. Yang X, Yu Y, Xu J, Shu H, Xia J, Liu H, Wu Y, Zhang L, Yu Z, Fang M, Yu T, Wang Y, Pan S, Zou X, Yuan S, Shang Y. Clinical course and outcomes of critically ill patients with SARS-CoV-2 pneumonia in Wuhan, China: a single-centered, retrospective, observational study [published online ahead of time Feb 24, 2020]. *Lancet Respir Med*. doi:10.1016/S2213-2600(20)30079-5

- Accepted Article
10. Li G, Clercq ED. Therapeutic options for the 2019 novel coronavirus (2019-nCoV). *Nat Rev Drug Discov.* 2020;19(3):149–50.
 11. Paragas J, Blatt LM, Hartmann C, Huggins JW, Endy TP. Interferon alfacon1 is an inhibitor of SARS-coronavirus in cell-based models. *Antiviral Res.* 2005;66(2–3):99–102.
 12. Wang W, Ye L, Ye L, Li B, Gao B, Zeng Y, Kong L, Fang X, Zheng H, Wu Z, She Y. Up-regulation of IL-6 and TNF-alpha induced by SARS-coronavirus spike protein in murine macrophages via NF-kappaB pathway. *Virus Res.* 2007;128(1–2):1–8.
 13. Hoenen T, Groseth A, Feldmann H. Therapeutic strategies to target the Ebola virus life cycle. *Nat Rev Microbiol.* 2019;17(10):593–606.
 14. Lo MK, Feldmann F, Gary JM, Jordan R, Bannister R, Cronin J, Patel NR, Klena JD, Nichol ST, Cihlar T, Zaki SR, Feldmann H, Spiropoulou CF, de Wit E. Remdesivir (GS-5734) protects African green monkeys from Nipah virus challenge. *Sci Transl Med.* 2019;11(494).
 15. Sheahan TP, Sims AC, Graham RL, Menachery VD, Gralinski LE, Case JB, Leist SR, Pycr K, Feng JY, Trantcheva I, Bannister R, Park Y, Babusis D, Clarke MO, Mackman RL, Spahn JE, Palmiotti CA, Siegel D, Ray AS, Cihlar T, Jordan R, Denison MR, Baric RS. Broad-spectrum antiviral GS-5734 inhibits both epidemic and zoonotic coronaviruses. *Sci Transl Med.* 2017;9(396).
 16. Gordon CJ, Tchesnokov EP, Feng JY, Porter DP, Gotte M. The antiviral compound remdesivir potently inhibits RNA-dependent RNA polymerase from Middle East respiratory syndrome coronavirus [published online ahead of print Feb 24 2020]. *J Biol Chem.* doi: 10.1074/jbcAC120.031056
 17. Tchesnokov EP, Feng JY, Porter DP, Götte M. Mechanism of Inhibition of Ebola Virus RNA-Dependent RNA Polymerase by Remdesivir. *Viruses.* 2019;11(4).
 18. Agostini ML, Andres EL, Sims AC, Graham RL, Sheahan TP, Lu X, Smith EC, Case JB, Feng JY, Jordan R, Ray AS, Cihlar T, Siegel D, Mackman RL, Clarke MO, Baric RS, Denison MR. Coronavirus Susceptibility to the Antiviral Remdesivir (GS-5734) Is Mediated by the Viral Polymerase and the Proofreading Exoribonuclease. *mBio.* 2018;9(2).

- Accepted Article
19. European Medicines Agency Committee for Medicinal Products for Human Use (CHMP). CHMP assessment report. Available from: [ema.europa.eu/en/documents/referral/assessment-report-article-53-procedure-medicinal-products-under-development-treatment-ebola_en.pdf](https://www.ema.europa.eu/en/documents/referral/assessment-report-article-53-procedure-medicinal-products-under-development-treatment-ebola_en.pdf). Accessed March 16,2020.
 20. The COVID-19 Investigation Team. First 12 patients with coronavirus disease 2019 (COVID-19) in the United States [published online ahead of print and peer review Mar 12, 2020]. medRxiv. doi/10.1101/2020.03.09.20032896
 21. ClinicalTrials.gov [Internet]. Bethesda (MD): National Library of Medicine (US). 2020 Feb 5-. Identifier NCT04252664, Mild/Moderate 2019-nCoV; 2020 Feb 24 [cited 2020 Mar 18]; [about 4 screens]. Available from: <https://clinicaltrials.gov/ct2/show/NCT04252664>
 22. ClinicalTrials.gov [Internet]. Bethesda (MD): National Library of Medicine (US). 2020 Feb 6-. Identifier NCT04257656, Severe 2019-nCoV Remdesivir RCT; 2020 Feb 24 [cited 2020 Mar 18]; [about 4 screens]. Available from: <https://clinicaltrials.gov/ct2/show/NCT04257656>
 23. ClinicalTrials.gov [Internet]. Bethesda (MD): National Library of Medicine (US). 2018 Oct 25-. Identifier NCT03719586, Investigational Therapeutics for the Treatment of People With Ebola Virus Disease. 2019 Oct 21 [cited 2020 Mar 18]; [about 4 screens]. Available from: <https://clinicaltrials.gov/ct2/show/NCT03719586>
 24. Warren TK, Jordan R, Lo MK, Ray AS, Mackman RL, Soloveva V, Siegel D, Perron M, Bannister R, Hui HC, Larson N, Strickley R, Wells J, Stuthman KS, Von Tongeren SA, Garza NL, Donnelly G, Shurtleff AC, Retterer CJ, Gharaibeh D, Zamani R, Kenny T, Eaton BP, Grimes E, Welch LS, Gomba L, Wilhelmsen CL, NicholsDK, Nuss JE, Nagle ER, Kugelman JR, Palacios G, Doerffler E, Neville S, Carra E, Clarke MO, Zhang L, Lew W, Ross B, Wang Q, Chun K, Wolfe L, Babusis D, Park Y, Stray KM, Trancheva I, Feng JY, Barauskas O, Xuy Y, Wong P, Braun MR, Flint M, McMullan LK, Chenn SS, Fearn R, Swaminathan S, Mayers DL, Spiropoulou CF, Lee WA, Nichol ST, Cihlar T, Bavari S. Therapeutic efficacy of the small molecule GS-5734 against Ebola virus in rhesus monkeys. *Nature*. 2016;531(7594):381–5.

- Accepted Article
25. Cho A, Saunders OL, Butler T, Zhang L, Xu J, Vela JE, Feng JY, Ras AS, Kim CU. Synthesis and antiviral activity of a series of 1'-substituted 4-aza-7,9-dideazaadenosine C-nucleosides. *Bioorg Med Chem Lett*. 2012;22(8):2705–7.
 26. Madelain V, Nguyen THT, Olivo A, de Lamballerie X, Guedj J, Taburet A-M, Mentré F. Ebola Virus Infection: Review of the Pharmacokinetic and Pharmacodynamic Properties of Drugs Considered for Testing in Human Efficacy Trials. *Clin Pharmacokinet*. 2016;55(8):907–23.
 27. Mulangu S, Dodd LE, Davey RT, Tshiani Mbaya O, Proschan M, Mukadi D, Manzo M, Nzolo D, Oloma A, Ibanda A, Ali R, Coulibaly S, Levine AC, Grais R, Diaz J, Lane C, Muyembe-Tamfum. A Randomized, Controlled Trial of Ebola Virus Disease Therapeutics. *N Engl J Med*. 2019 12;381(24):2293–303.
 28. ClinicalTrials.gov [Internet]. Bethesda (MD): National Library of Medicine (US). 2020 Feb 21-. Identifier NCT04280705, Adaptive COVID-19 Treatment Trial. 2020 Mar 19 [cited 2020 Mar 18]; [about 4 screens]. Available from: <https://clinicaltrials.gov/ct2/show/NCT04280705>
 29. World Health Organization. Deliberations on design options for randomized controlled clinical trials to assess the safety and efficacy of investigational therapeutics for the treatment of patients with Ebola virus disease Appendix 4. Summaries of evidence from selected experimental therapeutics. Available at: <https://www.who.int/ebola/drc-2018/summaries-of-evidence-experimental-therapeutics.pdf?ua=1>. Accessed March 18, 2020.
 30. Savarino A, Boelaert JR, Cassone A, Majori G, Cauda R. Effects of chloroquine on viral infections: an old drug against today's diseases? *Lancet Infect Dis*. 2003;3(11):722–7.
 31. Savarino A, Gennero L, Sperber K, Boelaert JR. The anti-HIV-1 activity of chloroquine. *J Clin Virol Off Publ Pan Am Soc Clin Virol*. 2001;20(3):131–5.
 32. Vincent MJ, Bergeron E, Benjannet S, Erickson BR, Rollin PE, Ksiazek TG, Seidah NG, Nichol ST. Chloroquine is a potent inhibitor of SARS coronavirus infection and spread. *Virology*. 2005;2(1):69.
 33. Keyaerts E, Vijgen L, Maes P, Neyts J, Van Ranst M. In vitro inhibition of severe acute respiratory syndrome coronavirus by chloroquine. *Biochem Biophys Res Commun*. 2004;323(1):264–8.

- Accepted Article
34. Yao X, Ye F, Zhang M, Cui C, Huang B, Niu P, Liu X, Zhao L, Dong E, Song C, Zhan S, Lu R, Li H, Tan W, Liu D. In Vitro Antiviral Activity and Projection of Optimized Dosing Design of Hydroxychloroquine for the Treatment of Severe Acute Respiratory Syndrome Coronavirus 2 (SARS-CoV-2) [published online ahead of print Feb 26, 2020]. *Clin Infect Dis*. Doi:10.1093/cid/ciaa237
 35. Wang M, Cao R, Zhang L, Yang X, Liu J, Xu M, Shi Z, Hu Z, Zhong W, Xiao G. Remdesivir and chloroquine effectively inhibit the recently emerged novel coronavirus (2019-nCoV) in vitro. *Cell Res*. 2020;30(3):269–71.
 36. Gao J, Tian Z, Yang X. Breakthrough: Chloroquine phosphate has shown apparent efficacy in treatment of COVID-19 associated pneumonia in clinical studies. *Biosci Trends*. 2020;14(1):72–3.
 37. ClinicalTrials.gov [Internet]. Bethesda (MD): National Library of Medicine (US). 2020 Feb 7-. Identifier NCT04261517, Efficacy and Safety of Hydroxychloroquine for Treatment of Pneumonia Caused by 2019-nCoV (HC-nCoV); 2020 Mar 4 [cited 2020 Mar 18]; [about 4 screens]. Available from: <https://clinicaltrials.gov/ct2/show/NCT04261517>
 38. Zhonghua Jie, He He Hu, Xi Za Zhi, Zhonghua Jiehe He Huxi Zazhi Chin J. Expert consensus on chloroquine phosphate for the treatment of novel coronavirus pneumonia. *Tuberc Respir Dis*. 2020;43(3):185-188.
 39. Sanofi-Aventis US LLC. Aralen (Chloroquine phosphate) package insert. Bridgewater, NJ; 2017.
 40. Concordia Pharmaceuticals Inc. Plaquenil (hydroxychloroquine) package insert. St. Michael, Barbados; 2017.
 41. Briggs G, Freeman R, Towers C, Forinash A. *Drugs in Pregnancy and Lactation*. 11th ed. Wolters Kluwer; 2017.
 42. Pareek A, Chandurkar N, Thomas N, Viswanathan V, Deshpande A, Gupta OP, Shah A, Kakrani A, Bhandari S, Thulasidharan NK, Saboo B, Devaramani S, Vijaykumar NB, Sharma S, Agrawal N, Mahesh M, Kothari K. Efficacy and safety of hydroxychloroquine in the treatment of type 2 diabetes mellitus: a double blind, randomized comparison with pioglitazone. *Curr Med Res Opin*. 2014;30(7):1257–66.

- Accepted Article
43. Cvetkovic RS, Goa KL. Lopinavir/Ritonavir. *Drugs*. 2003;63(8):769–802.
 44. Chu CM, Cheng VCC, Hung IFN, Wong MML, Chan KH, Chan KS, Kao RY, Poon LL, Wong CL, Guan Y, Peiris JS, Yuen KY. Role of lopinavir/ritonavir in the treatment of SARS: initial virological and clinical findings. *Thorax*. 2004;59(3):252–6.
 45. Chan JF-W, Yao Y, Yeung M-L, Deng W, Bao L, Jia L, Li F, Xiao C, Gao H, Yu P, Cai JP, Chu H, Zhou J, Chen H, Yuen KY. Treatment With Lopinavir/Ritonavir or Interferon- β 1b Improves Outcome of MERS-CoV Infection in a Nonhuman Primate Model of Common Marmoset. *J Infect Dis*. 2015;212(12):1904–13.
 46. Sheahan TP, Sims AC, Leist SR, Schäfer A, Won J, Brown AJ, Montgomery SA, Hogg A, Babusis D, Clarke MO, Spahn JE, Bauer L, Sellers S, Porter D, Feng JY, Cihlar T, Jordan R, Denison MR, Baric RS. Comparative therapeutic efficacy of remdesivir and combination lopinavir, ritonavir, and interferon beta against MERS-CoV. *Nat Commun*. 2020; 222 (11).
 47. Vastag B. Old drugs for a new bug: influenza, HIV drugs enlisted to fight SARS. *JAMA*. 2003;290(13):1695–6.
 48. Chan KS, Lai ST, Chu CM, Tsui E, Tam CY, Wong MM, Tse MW, Que TL, Peiris JS, Sung J, Wong VC, Yuen KY. Treatment of severe acute respiratory syndrome with lopinavir/ritonavir: a multicentre retrospective matched cohort study. *Hong Kong Med J*. 2003;9(6):399–406.
 49. Young BE, Ong SWX, Kalimuddin S, Low JG, Tan SY, Loh J, Ng O, Marimuthu K, Ang LW, Mak TM, Lau SK, Anderson DE, Chan KS, Tan TY, Ng TY, Cui L, Said Z, Kurupatham L, Chen MI, Chan M, Vasoo S, Wang L, Tan BH, Lin RT, Lee V, Leo Y, Lye DC. Epidemiologic Features and Clinical Course of Patients Infected With SARS-CoV-2 in Singapore [published online ahead of print Mar 3, 2020]. *JAMA*. doi: 10.1001/jama.2020.3204
 50. Zhou F, Yu T, Du R, Fan G, Liu Y, Liu Z, Xang J, Wang Y, Song B, Gu X, Guan L, Wei Y, Li H, Wu X, Xu J, Tu S, Zhang Y, Chen H. Clinical course and risk factors for mortality of adult inpatients with COVID-19 in Wuhan, China: a retrospective cohort study [published online ahead of print Mar 11, 2020]. *Lancet*. doi: 10.1016/S0140-6737(20)30566-3

51. Cao B, Wang Y, Wen D, Liu W, Wang J, Fan G, Ruan L, Song B, Cai Y, Wei M, Li X, Xia J, Chen N, Xiang J, Yu T, Bai T, Xie X, Zhang L, Li C, Yuan Y, Chen H, Li H, Huang H, Tu S, Gong F, Liu Y, Wei Y, Dong C, Zhou F, Gu X, Xu J, Liu Z, Zhang Y, Li H, Shang L, Wang K, Li K, Zhou X, Dong X, Qu Z, Lu S, Hu X, Ruan S, Luo S, Wu J, Peng L, Cheng F, Pan L, Zou J, Jia C, Wang J, Liu X, Wang S, Wu X, Ge Q, He J, Zhan H, Qiu F, Guo L, Huang C, Jaki T, Hayden FG, Horby PW, Zhang D, Wang C. A Trial of Lopinavir–Ritonavir in Adults Hospitalized with Severe Covid-19 [published online ahead of print March 18, 2020]. *N Engl J Med*. doi:10.1056/NEJMoa2001282
52. ClinicalTrials.gov. Bethesda (MD): National Library of Medicine (US). 2016 July 27. Identifier NCT02845843, MERS-CoV Infection treated With A Combination of Lopinavir /Ritonavir and Interferon Beta-1b (MIRACLE). 2010 Mar 7 [cited 2020 Mar 18]; [about 4 screens]. Available from: <https://clinicaltrials.gov/ct2/show/NCT02845843>
53. ClinicalTrials.gov. Bethesda (MD): National Library of Medicine (US). 2020 Feb 5. Identifier NCT04252885, The Efficacy of Lopinavir Plus Ritonavir and Arbidol Against Novel Coronavirus Infection. 2020 Feb 5 [cited 2020 Mar 18]; [about 4 screens]. Available from: <https://clinicaltrials.gov/ct2/show/NCT04252885>
54. Chinese Clinical Trial Register. Chengdu (Sichuan): Ministry of Health (China). 2020 Jan 23. Identifier ChiCTR2000029308, A randomized, controlled open-label trial to evaluate the efficacy and safety of lopinavir-ritonavir in hospitalized patients with 2019-nCoV infection; 2020 Mar 9. 2020 [cited 2020 Mar 18]; [about 4 screens]. Available from: <http://www.chictr.org.cn/showprojen.aspx?proj=48684>
55. AbVie Inc. Kaletra (lopinavir and ritonavir) package insert. North Chicago, IL; 2016.
56. Panel on Treatment of Pregnant Women with HIV Infection and Prevention of Perinatal Transmission. Recommendations for the Use of Antiretroviral Drugs in Pregnant Women with HIV Infection and Interventions to Reduce Perinatal HIV Transmission in the United States. Available from: <https://aidsinfo.nih.gov/contentfiles/lvguidelines/PerinatalGL.pdf>. Accessed March 16, 2020.
57. Prohaska ES, King AR. Administration of antiretroviral medication via enteral tubes. *Am J Health-Syst Pharm AJHP Off J Am Soc Health-Syst Pharm*. 2012;69(24):2140–6.

58. Crotty S, Cameron C, Andino R. Ribavirin's antiviral mechanism of action: lethal mutagenesis? *J Mol Med.* 2002;80(2):86–95.
59. Merck & Co., Inc. Rebetol (ribavirin) package insert. Whitehouse Station, NJ; 2013.
60. Wenzel RP, Edmond MB. Managing SARS amidst Uncertainty. *N Engl J Med.* 2003;348(20):1947–8.
61. Tan ELC, Ooi EE, Lin C-Y, Tan HC, Ling AE, Lim B, Stanton LW. Inhibition of SARS coronavirus infection in vitro with clinically approved antiviral drugs. *Emerg Infect Dis.* 2004;10(4):581–6.
62. Booth CM, Matukas LM, Tomlinson GA, Rachlis AR, Rose DB, Dwosh HA, Walmsley SL, Mazzuli T, Avendano M, Derkach P, Ephtimios IE, Kitai I, Mederski BD, Shadowitz SB, Gold WL, Hawryluck LA, Rea E, Chenkin JS, Cescon DW, Poutanen SM, Detsky AS. Clinical Features and Short-term Outcomes of 144 Patients With SARS in the Greater Toronto Area. *JAMA.* 2003;289(21):2801–9.
63. Falzarano D, de Wit E, Martellaro C, Callison J, Munster VJ, Feldmann H. Inhibition of novel β coronavirus replication by a combination of interferon- α 2b and ribavirin. *Sci Rep.* 2013;3:1686.
64. Tsang KW, Ho PL, Ooi GC, Yee WK, Wang T, Chan-Yeung M, Lam WK, Seto WH, Yam LY, Cheung TM, Wong PC, Lam B, Ip MS, Chan J, Yuen KY, Lai KN. A Cluster of Cases of Severe Acute Respiratory Syndrome in Hong Kong. *N Engl J Med.* 2003;348(20):1977–85.
65. Koren G, King S, Knowles S, Phillips E. Ribavirin in the treatment of SARS: A new trick for an old drug? *CMAJ Can Med Assoc J J Assoc Medicale Can.* 2003;168(10):1289–92.
66. Knowles SR, Phillips EJ, Dresser L, Matukas L. Common adverse events associated with the use of ribavirin for severe acute respiratory syndrome in Canada. *Clin Infect Dis Off Publ Infect Dis Soc Am.* 2003;37(8):1139–42.
67. Chang CH, Chen KY, Lai MY, Chan KA. Meta-analysis: ribavirin-induced haemolytic anaemia in patients with chronic hepatitis C. *Aliment Pharmacol Ther.* 2002;16(9):1623–32.
68. Romark Pharmaceuticals. Alinia (nitazoxanide) package insert. Tampa, FL; 2005

69. Amadi B, Mwiya M, Musuku J, Watuka A, Sianongo S, Ayoub A, Kelly P. Effect of nitazoxanide on morbidity and mortality in Zambian children with cryptosporidiosis: a randomised controlled trial. *Lancet*. 2002;360(9343):1375–80.
70. Finegold SM, Molitoris D, Väisänen M-L. Study of the In Vitro Activities of Rifaximin and Comparator Agents against 536 Anaerobic Intestinal Bacteria from the Perspective of Potential Utility in Pathology Involving Bowel Flora. *Antimicrob Agents Chemother*. 2009;53(1):281–6.
71. Rossignol J-F. Nitazoxanide: A first-in-class broad-spectrum antiviral agent. *Antiviral Res*. 2014;110:94–103.
72. Gamiño-Arroyo AE, Guerrero ML, McCarthy S, Ramírez-Venegas A, Llamosas-Gallardo B, Galindo-Fraga A, Moreno-Espinosa S, Roldán-Aragón Y, Araujo-Meléndez J, Hunsberger S, Ibarra-González V, Martínez-López J, García-Andrade LA, Kapushoc H, Holley HP, Smolskis MC, Ruiz-Palacios GM, Beigel JH. Efficacy and Safety of Nitazoxanide in Addition to Standard of Care for the Treatment of Severe Acute Respiratory Illness. *Clin Infect Dis Off Publ Infect Dis Soc Am*. 2019;69(11):1903–11.
73. Rossignol J-F, Stachulski AV. Syntheses and Antibacterial Activities of Tizoxanide, an N-(Nitrothiazolyl)salicylamide, and its O-Aryl Glucuronide. *J Chem Res Synop*. 1999;(1):44–5.
74. Rossignol JF, La Frazia S, Chiappa L, Ciucci A, Santoro MG. Thiazolidines, a new class of anti-influenza molecules targeting viral hemagglutinin at the post-translational level. *J Biol Chem*. 2009;284(43):29798–808.
75. Clerici M, Trabattoni D, Pacci M, Biasin M, Rossignol JF. The anti-infective Nitazoxanide shows strong immunomodulating effects (155.21). *J Immunol*. 2011;186(1):155.21.
76. Cao J, Forrest JC, Zhang X. A screen of the NIH Clinical Collection small molecule library identifies potential anti-coronavirus drugs. *Antiviral Res*. 2015;114:1–10.
77. Haffizulla J, Hartman A, Hoppers M, Resnick H, Samudrala S, Ginocchio C, Bardin M, Rossignol JF. Effect of nitazoxanide in adults and adolescents with acute uncomplicated influenza: a double-blind, randomised, placebo-controlled, phase 2b/3 trial. *Lancet Infect Dis*. 2014;14(7):609–18.

- Accepted Article
78. Vets E, Rossignol J-F, Jackson AS. Effects of nitazoxanide on pharmacokinetics and pharmacodynamics of a single dose of warfarin. *Am J Health Syst Pharm*. 2009;66(9):838–42.
 79. Panel on Antiretroviral Guidelines for Adults and Adolescents. Guidelines for the use of antiretroviral agents in HIV-1-infected adults and adolescents. Department of Health and, Human Services. Guidelines for the Use of Antiretroviral Agents in HIV-1-Infected Adults and Adolescents. Available from: <http://www.aidsinfo.nih.gov/ContentFiles/AdultandAdolescentGL.pdf>. Accessed March 16, 2020.
 80. Yamamoto N, Yang R, Yoshinaka Y, Amari S, Nakano T, Cinatl J, Rabenau H, Doerr HW, Hunsmann G, Otaka A, Tamamura H, Fujii N, Yamamoto N. HIV protease inhibitor nelfinavir inhibits replication of SARS-associated coronavirus. *Biochem Biophys Res Commun*. 2004;318(3):719–25.
 81. Nelfinavir was predicted to be a potential inhibitor of 2019-nCov main protease by an integrative approach combining homology modelling, molecular docking and binding free energy calculation [published online ahead of print January 28, 2020]. *bioRxiv*. doi: 10.1101/2020.01.27.921627
 82. Agouron Pharmaceuticals Inc. Viracept (nelfinavir mesylate) package insert. La Jolla, CA; 2005.
 83. Trapé M, Barnosky S. Nelfinavir in expanded postexposure prophylaxis causing acute hepatitis with cholestatic features: two case reports. *Infect Control Hosp Epidemiol*. 2001 Jun;22(6):333–4.
 84. Nelfinavir LiverTox: Clinical and Research Information on Drug-Induced Liver Injury. Available from: <http://www.ncbi.nlm.nih.gov/books/NBK548311/>. Accessed March 14 2020.
 85. Khaliq Y, Gallicano K, Seguin I, Fyke K, Carignan G, Bulman D, Badley A, Cameron DW. Single and multiple dose pharmacokinetics of nelfinavir and CYP2C19 activity in human immunodeficiency virus-infected patients with chronic liver disease. *Br J Clin Pharmacol*. 2000;50(2):108–15.
 86. Billiau A. The interferons: a brief introduction. *Med Clin North Am*. 1986 May;Suppl:7–11.
 87. Merck & Co. Inc. Intron A (interferon alfa-2b) package insert. Whitehouse Station, NJ; 2014.

- Accepted Article
88. Haagmans BL, Kuiken T, Martina BE, Fouchier RAM, Rimmelzwaan GF, van Amerongen G, Van Riel D, de Jong T, Itamura S, Chan KH, Tashiro M, Osterhaus AD. Pegylated interferon-alpha protects type 1 pneumocytes against SARS coronavirus infection in macaques. *Nat Med.* 2004;10(3):290–3.
 89. Morgenstern B, Michaelis M, Baer PC, Doerr HW, Cinatl J. Ribavirin and interferon-beta synergistically inhibit SARS-associated coronavirus replication in animal and human cell lines. *Biochem Biophys Res Commun.* 2005;326(4):905–8.
 90. Chen F, Chan KH, Jiang Y, Kao RYT, Lu HT, Fan KW, Cheng VC, Tsui WH, Hung IF, Lee TS, Guan Y, Peiris JS, Yuen KY. In vitro susceptibility of 10 clinical isolates of SARS coronavirus to selected antiviral compounds. *J Clin Virol Off Publ Pan Am Soc Clin Virol.* 2004;31(1):69–75.
 91. Arabi YM, Balkhy H, Al-Omari A, Al-Hameed F, Al-Aithan A, Abdulmomen A, Qushmaq I, Sindi AA, Mady A, Solamain O, Al-Raddadi R, Maghrabi K, Ragab A, Al Mekhlafi GA, Balkhy HH, Al Harthy A, Kharaba A, Gramish JA, Al-Aithan AM, Al-Dawood A, Merson L, Hayden FG, Fowler R. Ribavirin and Interferon for Critically Ill Patients with Middle East Respiratory Coronavirus (MERS-CoV) Infection. *Clin Infect Dis.* 2019;pii:ciz544.
 92. Omrani AS, Saad MM, Baig K, Bahloul A, Abdul-Matin M, Alaidaroos AY, Almakhafi GA, Albarrak MM, Memish ZA, Albarrak AM. Ribavirin and interferon alfa-2a for severe Middle East respiratory syndrome coronavirus infection: a retrospective cohort study. *Lancet Infect Dis.* 2014;14(11):1090–5.
 93. Clinicaltrials.gov [Internet]. Bethesda (MD):National Library of Medicine (US). 2020 Feb 19-. Identifier NCT04276688, Lopinavir/Ritonavir, Ribavirin and IFN-beta Combination for nCoV Treatment; 2020 Feb 28. [cited 2020 Mar 18]; [about 4 screens]. Available from: <https://clinicaltrials.gov/ct2/show/NCT04276688>
 94. ClinicalTrials.gov [Internet]. Bethesda (MD): National Library of Medicine (US). 2020 Mar 3-. Identifier NCT04293887, Efficacy and Safety of IFN- α 2 β in the Treatment of Novel Coronavirus Patients; 2020 Mar 3 [cited 2020 Mar 18]; [about 4 screens]. Available from: <https://clinicaltrials.gov/ct2/show/NCT04293887>

95. Russo MW, Fried MW. Side effects of therapy for chronic hepatitis C. *Gastroenterology*. 2003 May;124(6):1711–9.
96. Huraib S, Tanimu D, Romeh SA, Quadri K, Ghamdi GA, Iqbal A, Abdulkader A. Interferon- α in chronic hepatitis C infection in dialysis patients. *Am J Kidney Dis*. 1999;34(1):55–60.
97. Sulkowski MS, Cooper C, Hunyady B, Jia J, Ogurtsov P, Peck-Radosavljevic M, Shiffman ML, Yurdaydin C, Dalgard O. Management of adverse effects of Peg-IFN and ribavirin therapy for hepatitis C. *Nat Rev Gastroenterol Hepatol*. 2011;8(4):212–23.
98. Elli Lilly and Company. Olumiant (baricitinib) package insert. Indianapolis, IN; 2018.
99. Lu R, Zhao X, Li J, Niu P, Yang B, Wu H, Wang W, Song H, Huang B, Zhu N, Bi Y, Ma X, Zhan F, Wang L, Hu T, Zhou H, Hu Z, Zhou W, Zhao L, Chen J, Meng Y, Wang J, Lin Y, Yuan J, Xie Z, Ma J, Liu W, Wang D, Xu W, Holmes E, Gao G, Wu G, Chen W, Shi W, Tan W. Genomic characterization and epidemiology of 2019 novel coronavirus: implications for virus origins and receptor binding. *Lancet*. 2020; 395(10224):P565-574.
100. Mehta P, McAuley DF, Brown M, Sanchez E, Tattersall RS, Manson JJ. COVID-19: consider cytokine storm syndromes and immunosuppression [published online ahead of print March 16, 2020]. *Lancet*. doi:10.1016/S0140-6736(20)30628-0
101. Ruan Q, Yang K, Wang W, Jiang L, Song J. Clinical predictors of mortality due to COVID-19 based on an analysis of data of 150 patients from Wuhan, China [published online ahead of print March 3, 2020]. *Intensive Care Med*. doi:10.1007/s00134-020-05991-x
102. Stebbing J, Phelan A, Griffin I, Tucker C, Oechsle O, Smith D, Richardson P. COVID-19: combining antiviral and anti-inflammatory treatments [published online ahead of print February 27, 2020]. *Lancet Infect Dis*. Doi:10.1016/S1473-3099(20)30132-8
103. Genentech Inc. Actemra (tocilizumab) injection package insert. South San Francisco, CA; 2018.
104. Cameron MJ, Bermejo-Martin JF, Danesh A, Muller MP, Kelvin DJ. Human immunopathogenesis of severe acute respiratory syndrome (SARS). *Virus Res*. 2008;133(1):13–9.

- Accepted Article
105. Lau SKP, Lau CCY, Chan K-H, Li CPY, Chen H, Jin D-Y, Chan JFW, Woo PCY, Yuen KY. Delayed induction of proinflammatory cytokines and suppression of innate antiviral response by the novel Middle East respiratory syndrome coronavirus: implications for pathogenesis and treatment. *J Gen Virol.* 2013;94(Pt 12):2679–90.
 106. Chen N, Zhou M, Dong X, Qu J, Gong F, Han Y, Qiu Y, Wang J, Liu Y, Wei Y, Xia J, Yu T, Zhang X, Zhang L. Epidemiological and clinical characteristics of 99 cases of 2019 novel coronavirus pneumonia in Wuhan, China: a descriptive study. *Lancet.* 2020;395(10223):507–13.
 107. Xu Z, Shi L, Wang Y, Zhang J, Huang L, Zhang C, Liu S, Zhao P, Liu H, Zhu L, Tai Y, Bai C, Gao T, Song J, Xia P, Dong J, Zhao J. Pathological findings of COVID-19 associated with acute respiratory distress syndrome [published online ahead of print February 18, 2020]. *Lancet Respir Med.* doi:10.1016/S2213-2600(20)30076-X
 108. Xu X, Mingfeng H, Li T, Sun W, Dongsheng W, Binqing F, Zhou Y, Zheng X, Yang Y, Li X, Zhang X, Pan A, Wei H. Effective Treatment of Severe COVID-19 Patients with Tocilizumab. 2020;1(26):1–12.
 109. ClinicalTrials.gov [Internet]. Bethesda (MD): National Library of Medicine (US). 2020 Mar 17-. Identifier NCT04310228, Favipiravir Combined With Tocilizumab in the Treatment of Corona Virus Disease 2019. 2020 Mar 17 [cited 2020 Mar 18]; [about 4 screens]. Available from: <https://clinicaltrials.gov/ct2/show/NCT04310228>
 110. ClinicalTrials.gov [Internet]. Bethesda (MD): National Library of Medicine (US). 2020 Mar 13-. Identifier NCT04306705, Tocilizumab vs CRRT in Management of Cytokine Release Syndrome (CRS) in COVID-19. 2020 Mar 17 [cited 2020 Mar 18]; [about 4 screens]. Available from: <https://clinicaltrials.gov/ct2/show/NCT04306705>
 111. ClinicalTrials.gov [Internet] Bethesda (MD): National Library of Medicine (US). 2020 Mar 19-. Identifier NCT04315298, Evaluation of the Efficacy and Safety of Sarilumab in Hospitalized Patients with COVID-19. 2020 Mar 19 [cited 2020 Mar 18]; [about 4 screens]. Available from: <https://clinicaltrials.gov/ct2/show/NCT04315298>

112. National Health Commission & State Administration of Traditional Chinese Medicine. Diagnosis and Treatment Protocol for Novel Coronavirus Pneumonia (Trial version 7). 2020 Mar 3;17.
113. Mao R, Liang J, Shen J, Ghosh S, Zhu L-R, Yang H, Wu KC, Chen MH. Implications of COVID-19 for patients with pre-existing digestive diseases [published online ahead of print March 11, 2020]. *Lancet Gastroenterol Hepatol*. doi:10.1016/S2468-1235(20)30076-5
114. Chen L, Xiong J, Bao L, Shi Y. Convalescent plasma as a potential therapy for COVID-19 [published online ahead of print February 27, 2020]. *Lancet Infect Dis*. Doi:10.1016/S1473-3099(20)30141-9
115. Luke TC, Kilbane EM, Jackson JL, Hoffman SL. Meta-analysis: convalescent blood products for Spanish influenza pneumonia: a future H5N1 treatment? *Ann Intern Med*. 2006;145(8):599–609.
116. Soo YOY, Cheng Y, Wong R, Hui DS, Lee CK, Tsang KK, NG MH, Chan P, Cheng G, Sung JJ. Retrospective comparison of convalescent plasma with continuing high-dose methylprednisolone treatment in SARS patients. *Clin Microbiol Infect Off Publ Eur Soc Clin Microbiol Infect Dis*. 2004;10(7):676–8.
117. Liu G, Li S. Convalescent plasma: a valid option in the treatment of COVID-19? *Insights on Clin Cell Immunol*. 2020;4: 001-002.
118. ClinicalTrials.gov [Internet]. Bethesda (MD): National Library of Medicine (US). 2020 Mar 3-. Identifier NCT04292340, Anti-SARS-CoV-2 Inactivated Convalescent Plasma in the Treatment of COVID-19. 2020 Mar 3 [cited 2020 Mar 18];[about 4 screens]. Available from: <https://clinicaltrials.gov/ct2/show/NCT04292340>
119. Arabi YM, Balkhy HH, Hayden FG, Bouchama A, Luke T, Baillie JK, Al-Omari A, Hajeer AH, Senga M, Denison MR, Nguyen-Van-Tam JS, Shindo N, Bermingham A, Chappell JD, Van Kerkhove MD, Fowler RA. Middle East Respiratory Syndrome. *N Engl J Med*. 2017;376(6):584-594.
120. Stockman LJ, Bellamy R, Garner P. SARS: systematic review of treatment effects. *PLoS Med*. 2006;3(9):e343.
121. Russell CD, Millar JE, Baillie JK. Clinical evidence does not support corticosteroid treatment for 2019-nCoV lung injury. *Lancet*. 2020; 15;395(10223):473–5.

- Accepted Article
122. Arabi YM, Mandourah Y, Al-Hameed F, Sindi AA, Almekhlafi GA, Hussein MA, Jose J, Pinto R, Al-Omari A, Kharaba A, Almotairi A, Al Khatib K, Alraddadi B, Shalbhouh S, Abdulmomen A, Qushmaq I, Mady A, Solaiman O, Al-Aithan AM, Al-Raddadi R, Ragab A, Balkhy HH, Al Harthy A, Deeb AM, Al Mutairi H, Al-Dawood A, Merson L, Hayden FG, Fowler RA. Corticosteroid Therapy for Critically Ill Patients with Middle East Respiratory Syndrome. *Am J Respir Crit Care Med*. 2018;15;197(6):757–67.
 123. ClinicalTrials.gov [Internet]. Bethesda (MD): National Library of Medicine (US). 2020 Feb 18-. Identifier NCT04273321, Efficacy and Safety of Corticosteroids in COVID-19. 2020 Feb 24 [cited 2020 Mar 18]; [about 4 screens]. Available from: <https://clinicaltrials.gov/ct2/show/NCT04273321>
 124. Blaising J, Polyak SJ, Pécheur E-I. Arbidol as a broad-spectrum antiviral: an update. *Antiviral Res*. 2014;107:84–94.
 125. Jordan PC, Stevens SK, Deval J. Nucleosides for the treatment of respiratory RNA virus infections [published online ahead of print March 21 2018]. *Antivir Chem Chemother*. doi: 10.1177/2040206618764483
 126. Chen C, Qi F, Shi K, Li Y, Li J, Chen Y, Pan J, Zhou T, Lin X, Zhang J, Luo Y, Li X, Xia J. Thalidomide Combined with Low-dose Glucocorticoid in the Treatment of COVID-19. Available from: www.preprints.org/manuscript/202002.0395/v1. Accessed March 15, 2020.

Table 1. Summary of practical considerations of antiviral therapies proposed against severe acute respiratory syndrome coronavirus 2 (SARS-CoV-2)

| Drug | Remdesivir ^{21,22,35} | Chloroquine ³⁹ | Hydroxychloroquine ^{33, 40} | LPV/r ^{44, 55,93} | Ribavirin ⁵⁹ | Nitazoxanide ⁶⁸ | Nelfinavir ⁸² |
|-----------------------|---|---|---|---|--|--|--|
| Dosing | 200 mg IV on day 1, then 100 mg IV daily for 5 to 10 days | 500 mg by mouth twice daily for 10 days | 400 mg by mouth twice daily for one day, then 200 mg twice daily for 4 days | 400 mg/100 mg by mouth twice daily for 14 days | <i>Not established</i> In clinical trials, 400mg by mouth twice daily for 14 days | 500 mg by mouth twice daily <i>Duration not defined</i> | Not studied in humans for SARS-CoV-2 |
| Formulation | IV contains beta-cyclodextrin | Oral tablet, oral solution contains propylene glycol | Oral tablet | Oral tablet, oral solution contains ethanol 42.4% [†] and propylene glycol | Oral tablet, oral solution contains propylene glycol, inhaled, IV not available in U.S. | Controlled release tablet, oral suspension Formulations are not bioequivalent | Oral tablet |
| Administration | IV over 30 minutes | Administer with food Can be crushed Consider diluting when used in a feeding tube | Administer with food Do not crush Film coating must be removed to before compounding | Administer with or without food Do not crush tablets Do not dilute solution (risk of | Administer with food Do not crush (hazardous) PPE must be worn during administration with all dosage forms | Administer with or without food Can be crushed and mixed with food Reconstituted powder stable for 7 | Administer with food Can be crushed Avoid mixing with acidic |

| | | | | | | | |
|------------------------------|--|---|--|---|--|--|---|
| | | | | precipitation), administer solution down a feeding tube with milk (no water) Solution incompatible with polyurethane feeding tubes | | days | foods |
| Dose Adjustments | Renal: CrCl <30mL/ min: Not studied RRT: Not studied Hepatic: Not studied | Renal N/A RRT: HD = 50% dose reduction CRRT = full dose Hepatic: N/A, use with caution | Renal: N/A RRT: N/A, use with caution Hepatic: N/A, use with caution | Renal: N/A RRT: Avoid against once daily dosing Hepatic: caution in severe liver impairment | Renal: CrCl 30-50 mL/min: 50% reduction CrCl <30 mL/min 75% reduction RRT: not established Hepatic: Child-Pugh Class B and C not recommended | Renal: N/A RRT: no data Hepatic: N/A | Renal: N/A RRT: N/A Hepatic: Child- Pugh Class B and C not recommended |
| Drug Interactions | None identified; Metabolized to active form via intracellular | Avoid CYP2D6 inhibitors or inducers Avoid use with LPV/r Avoid antacids within four hours of a dose | | Avoid CYP3A4, P- gp, OATP1B1, OATP1B3, and | No Interactions | No interactions | Avoid CYP3A4 and CYP2C19 inducers or |

| | kinase | Caution use with medications that increase QTc or cause hypoglycemia | UGT substrates | | | inhibitors |
|---------------------|--|--|--|---|---|---|
| Side effects | Data limited, reports of increased LFTs, nausea vomiting, gastroparesis, rectal bleeding | Nausea, vomiting, abdominal cramping, metallic taste, hemolysis (G6PD deficient), QTc prolongation, skin eruptions | Diarrhea, nausea, vomiting, increased serum amylase and LFTs | Hemolytic anemia, hypocalcemia, hypomagnesemia, nausea, dry cough, rashes, teratogenic | Abdominal pain, nausea, headache, urine discoloration, diarrhea, dizziness, urticaria | Diarrhea, nausea, flatulence, increase LFTs |

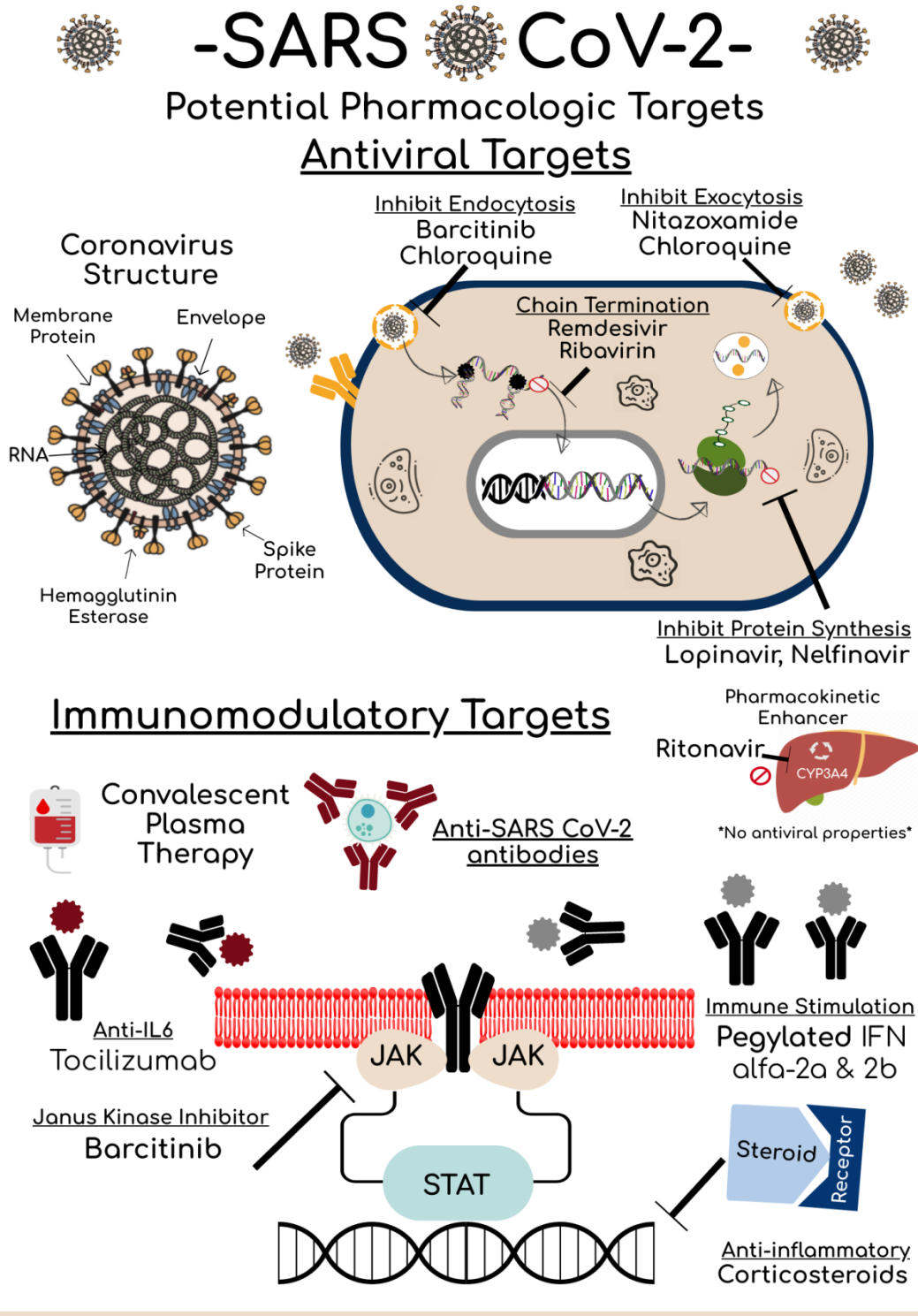
Footnotes: †Disulfiram-like reactions may occur with disulfiram or other drugs that produce these reactions (e.g., metronidazole)
 Abbreviations: LPV/r=lopinavir/ritonavir, IV=intravenous; PPE=personal protective equipment, CrCl=creatinine clearance, RRT=renal replacement therapy, HD=hemodialysis, CRRT=continuous renal replacement therapy, N/A=no adjustment, CYP=cytochrome P450, P-gp=P-glycoprotein, OATP=organic anion transporting polypeptide, UGT=UDP-glucuronosyltransferase, LFTs=liver function tests, G6PD= glucose-6-phosphate-dehydrogenase deficiency

Table 2. Summary of practical considerations of immune-modulating therapies proposed against severe acute respiratory syndrome coronavirus 2 (SARS-CoV-2)

| Drug | Interferon alpha/beta ^{52, 87} | Baricitinib ⁹⁸ | Tocilizumab ^{93, 102, 108} |
|--------------------------|--|--|---|
| Dosing | Not established Clinical trial: Interferon beta-1B 0.25mg subcutaneous injection alternate day for 3 days | Not studied in humans | 4-8 mg/kg IV once (maximum 800 mg) OR 400 mg IV once dose Consider additional dose 8- 12 hours later if continued clinical decompensation (maximum total dose of 2 doses) |
| Formulation | Subcutaneous injection Formulations studied†: alpha-2b, beta-1b | Oral tablet | IV |
| Administration | Injection can be performed into the abdomen or thigh Rotate injection sites | Without regards to meals No data for compounding, may be hazardous (carcinogenic) | IV infusion over 1 hour |
| Dose Adjustments | Renal: CrCl <30 mL/min‡ RRT: not established, may experience increased adverse effects Hepatic: Child-Pugh Class B and C not recommended | Renal: eGFR 30-60 mL/min/1.73 m ² decrease to 1 mg daily§ CrCl <30 mL/min: avoid RRT: N/A Hepatic: caution in severe liver impairment | Renal: N/A RRT: N/A Hepatic: hold if LFTs 1-3 x ULN (may resume when LFTs normalize) |
| Drug Interactions | N/A | Avoid strong OAT 3 inhibitors | Moderate induction of CYP1A2, CYP2B6, CYP2C9, CYP2C19, CYP2D6, CYP3A4, may decrease concentration of substrates |
| Side effects | Flu-like symptoms (fever, myalgias, and headaches), leukopenia, lymphopenia, | Boxed warnings: infection, upper respiratory tract infection, malignancy, | Infusion reactions, infection, neutropenia, thrombocytopenia, increased liver enzymes |

| | | | |
|--|--|--|-------------------------|
| | depression, injection site pain, autoimmune hepatitis and thyroiditis | thrombosis Other: neutropenia, elevations in platelets, LFTs, lipids, creatinine and creatinine phosphokinase | and lipid abnormalities |
|--|--|--|-------------------------|

Footnotes: †inhaled studied, formulation not available in United States; ‡ pegylated formulation only; § based on dose adjustments for rheumatoid arthritis,
Abbreviations: IV=intravenous, CrCl=creatinine clearance, eGFR=estimated glomerular filtration rate, RRT=renal replacement therapy, LFTs=liver function tests,
ULN=upper limit of normal



phar_2398_f1.png